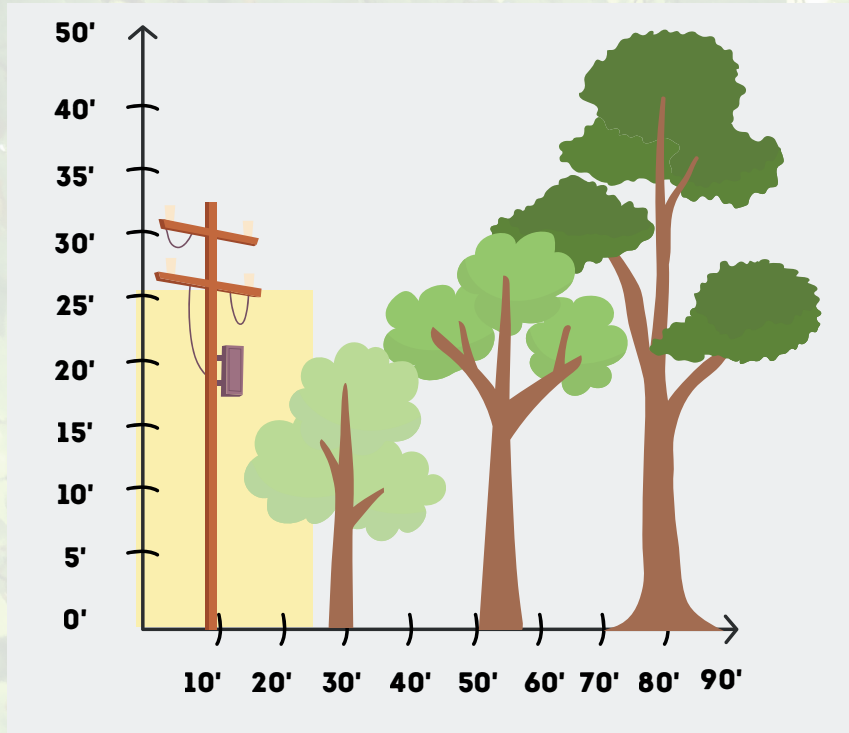


Right Tree, Right Place

Plant smart today to prevent problems tomorrow

Trees add beauty and value to your home, but planting them too close to power lines can lead to outages, extra trimming, and safety concerns. Choosing the right tree and planting it in the right place helps keep everyone safe and powered.



How Far Should Trees Be From Power Lines?

No Tree Zone (Yellow box)
Planting of trees should be avoided in this zone

Small Trees (Under 25 ft tall):
Plant at least **25 feet** away

Medium Trees (25-40 ft tall):
Plant at least **40 feet** away

Large trees (over 40 ft tall)
Plant at least **60 feet** away

Trees grow taller and wider over time.
Plan for the future.



Call Before You Dig

Call 811 at least two business days before planting.

It is free and helps locate underground utilities



When Should I Plant?

Fall and early spring are the best times to plant, when cooler temperatures and natural rainfall help new trees thrive.

Avoid planting large-growing trees like oak, pecan, pine, sycamore, and cottonwood near power lines.

Got a Question?
We Have the Answer.



By collaborating on proactive maintenance and smart planting, we can ensure safe and reliable power for our community.

