

Farm **Safety** Checklist

Power & The Plow



Before you start work:

- ☐ Look up for overhead lines before moving tall equipment.
- ☐ Keep at least 10 feet of clearance from power lines in every direction.
- ☐ Identify and mark underground lines by calling 811 before digging.

While working:

- ☐ Use a spotter when moving large or tall equipment.
- ☐ Be extra cautious when working at night or in low visibility.
- ☐ Never store hay, grain, or equipment under power lines.

If equipment contacts a power line:

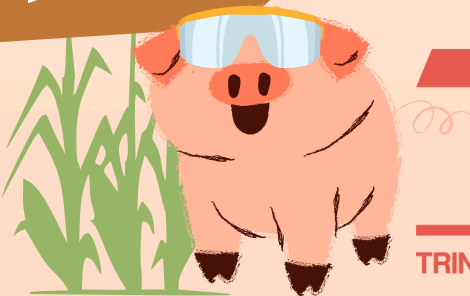
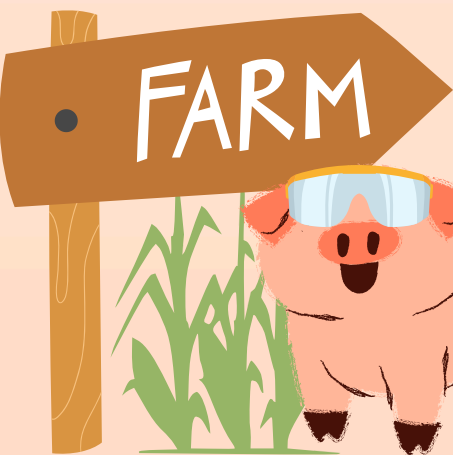
- ☐ Stay inside the cab and call 911.
- ☐ Warn others to stay away until help arrives.

If you must exit because of fire:

- ☐ Jump clear, without touching the vehicle.
- ☐ Land with feet together and shuffle away in small steps.

Every season:

- ☐ Review farm safety practices with everyone who works on your property.
- ☐ Keep outage and emergency numbers posted in easy-to-find places.



TVEC

TRINITY VALLEY ELECTRIC COOPERATIVE

