

# TEXAS CO-OP POWER

## *Howdy,* **BARDNERS**

Why midsummer  
nights in Texas  
are perfect for  
Shakespeare







# this is home

Mueller custom buildings make beautiful living spaces. Our manufactured & engineered exteriors provide flexibility for you to design a completely personalized interior, while supporting large spans and open floor plans. Give us a call or drop by today, and find out more about custom metal buildings from Mueller.\*

[www.muellerinc.com](http://www.muellerinc.com)  
877-2-MUELLER (877-268-3553)



\*Some exterior structures, such as decks & porches, were added post-engineering and not designed by Mueller. Please check local building codes before ordering.



Stormy sky over the Big Bend

## FEATURES

**8 All the State's a Stage** Texas' history, myths and wild spirit provide fertile ground for staging Shakespeare.  
By Clayton Stromberger

**12 Why the Raven Calls the Canyon** Book excerpt captures life off the grid in Big Bend.  
Text and photos by E. Dan Klepper

## FAVORITES

**5 Letters**

**6 Currents**

**18 Local Co-op News**

*Get the latest information plus energy and safety tips from your cooperative.*

**29 Texas History**

*Texas' OPEC*

By Robert Springer

**31 Recipes**

*The Secret to Salsa*

**35 Focus on Texas**

*Photo Contest: School's Out*

**36 Around Texas**

*List of Local Events*

**38 Hit the Road**

*Lolling Around Luling*

By Gene Fowler

## ONLINE

**TexasCoopPower.com**

*Find these stories online if they don't appear in your edition of the magazine.*

**Texas USA**

*The Original Texas Songster*

By Clay Coppedge

**Observations**

*A Slice of Heaven*

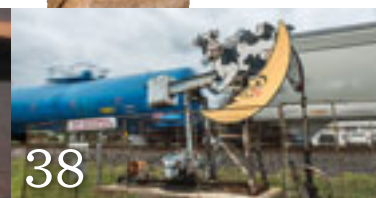
By Lonn Taylor

## NEXT MONTH

**Hill Country Gems** Scenic swath of Central Texas spotlights culture, history and natural wonders.



CANYON: E. DAN KLEPPER. CAIRN: JULIA ROBINSON



**ON THE COVER** *Camp Shakespeare youngsters perform The Winter's Tale at Winedale Theatre Barn.* Photo by Caroline Poe Photography

**TEXAS ELECTRIC COOPERATIVES BOARD OF DIRECTORS:** Bryan Lightfoot, Chair, Bartlett; Blaine Warzecha, Vice Chair, Victoria; Alan Lesley, Secretary-Treasurer, Comanche; Mark Boyd, Douglassville; William F. Hetherington, Bandera; Mark Stubbs, Greenville; Brent Wheeler, Dalhart • **PRESIDENT/CEO:** Mike Williams, Austin • **COMMUNICATIONS & MEMBER SERVICES COMMITTEE:** Jerry Boze, Kaufman; Clint Gardner, Coleman; Greg Henley, Tahoka; Billy Marricle, Bellville; Mark McClain, Roby; Gary Raybon, El Campo; Kathy Wood, Marshall; Brandon Young, McGregor • **MAGAZINE STAFF:** Martin Bevins, Vice President, Communications & Member Services; Charles J. Lohrmann, Editor; Tom Widlowski, Associate Editor; Karen Nejtek, Production Manager; Andy Doughty, Creative Manager; Elaine Sproull, Advertising Manager; Grace Arsiaga, Print Production Specialist; Chris Burrows, Senior Communications Specialist; Christine Carlson, Administrative Assistant; Paula Disbrowe, Food Editor; Travis Hill, Communications Specialist; Qasim K. Johnson, Administrative Assistant; Jessica Ridge, Communications Specialist; Jane Sharpe, Senior Designer; Britian Lee, Intern, Shannon Oelrich, Proofreader



**“To you, it’s the perfect lift chair. To me,  
it’s the best sleep chair I’ve ever had.”**

— J. Fitzgerald, VA



Sit up, lie down —  
and anywhere  
in between!

Easy-to-use remote for  
massage, heat, recline and lift

We’ve all had nights when we just can’t lie down in bed and sleep, whether it’s from heartburn, cardiac problems, hip or back aches – it could be a variety of reasons. Those are the nights we’d give anything for a comfortable chair to sleep in, one that reclines to exactly the right degree, raises feet and legs to precisely the desired level, supports the head and shoulders properly, operates easily even in the dead of night, and sends a hopeful sleeper right off to dreamland.

**Our Perfect Sleep Chair® is just the chair to do it all.** It’s a chair, true – the finest of lift chairs – but this chair is so much more! It’s designed to provide total comfort and relaxation not found in other chairs. It can’t be beat for comfortable, long-term sitting, TV viewing, relaxed reclining and – yes! – peaceful

sleep. Our chair’s recline technology allows you to pause the chair in an infinite number of positions, including the Trendelenburg position and the zero gravity position where your body experiences a minimum of internal and external stresses. You’ll love the other benefits, too: It helps with correct spinal alignment, promotes back pressure relief, and encourages better posture to prevent back and muscle pain.



This lift chair puts you  
safely on your feet!

**And there’s more!** The overstuffed, oversized biscuit style back and unique seat design will cradle you in comfort. Generously filled, wide armrests provide enhanced arm support when sitting or reclining. The high and low heat settings along with the multiple massage settings, can provide a soothing relaxation you might get at a spa – just imagine getting all that in a lift chair! It even has a battery backup in case of a power outage. Shipping charge includes white glove delivery. Professionals will deliver the chair to the exact spot in your home where you want it, unpack it, inspect it, test it, position it, and even carry the packaging away! You get your choice of fabrics and colors – **Call now!**

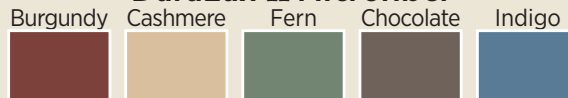
**The Perfect Sleep Chair®**  
**1-888-827-7671**

Please mention code 109371 when ordering.

**Long Lasting DuraLux Leather**



**DuraLux II Microfiber**



46471



## Planting the Seeds

I had just received a packet of milkweed seeds from Lands' End when the May issue of *Texas Co-op Power* [*Naturally Protective*] arrived. I immediately cleared a spot in my yard and planted the seeds.

JOEL MUCKLERoy | JOURDANTON KARNES EC

## About MacArthur

Gen. Douglas MacArthur was commander in chief of the South Pacific, which was primarily New Guinea, Australia, New Zealand and eventually the Philippines [*Chain of Command?*, Letters, June 2018]. Adm. Chester W. Nimitz was commander in chief of the Pacific Ocean Areas. This included all of the island groups from the Solomon Islands through Okinawa and Iwo Jima.

HOWARD MAX | FAIRVIEW GRAYSON-COLLIN EC

What was Gen. MacArthur doing? He was cooperating with Adm. Nimitz, who was in charge of all Pacific operations.

D.J. BRUCE | WEATHERFORD TRI-COUNTY EC

## Other Connections

Having had a "connected" home for the past 17 years, I was surprised there was no mention of X-10 or Z-Wave technology [*Connecting Your Home*, June 2018]. X-10 being a power line (the wires in your house) technology and Z-Wave being a radio frequency system of controls for lights, appliances, thermostats, TV and stereo, sprinkler systems, security systems integration,

## Keep Texas, Texas

Every day we lose a little bit more of our lush countryside due to progress. Laura Bush has a big job on her hands, and I hope it's not too late [*Naturally Protective*, May 2018]. I hope we can keep Texas, Texas.

JAN ALSGARD | LEANDER | PEDERNALES EC



water valves, door locks, etc.

JIM NEUMANN | VICTORIA VICTORIA EC

## East Texas Authors

I'd hoped the article on East Texas writer Joe R. Lansdale [*East Texas Mojo*, May 2018] would mention Caleb Pirtle III, a Kilgore native now writing out of Lindale. He has written over 75 books—among his more



recent is a prize-winning account of the Giddings oil strike of the 1970s, *Gamble in the Devil's Chalk*. He's now writing two fiction books on life in a small East Texas town in the 1930s.

JOHN NICKOLS | FORNEY TRINITY VALLEY EC

One of my favorite writers! For decades!

WILLIAM TROCINO | VIA FACEBOOK

I will be looking for him [Lansdale, left] on my next trip to the bookstore.

MARY JANE ZORN | VIA FACEBOOK

## Spilled Jewels

Beautiful picture of the dedicated spider mom [*Doting Mother*, Letters, November 2017].

Try this: Shine a bright flashlight onto the grass at night, holding the light on your head so you can look down the beam.

When you find a wolf spider, follow the beam to get closer. Wolf spider eyes glow a most brilliant aqua, and so do the babies'.

If disturbed, the babies scatter and look like spilled jewels.

SANDY GADSDEN | BANDERA BANDERA EC

## GET MORE TCP AT TexasCoopPower.com

Sign up for our e-newsletter for monthly updates, prize drawings and more!

## We want to hear from you!

ONLINE: TexasCoopPower.com/share

EMAIL: letters@TexasCoopPower.com

MAIL: Editor, Texas Co-op Power, 1122 Colorado St., 24th Floor, Austin, TX 78701

Please include your town and electric co-op. Letters may be edited for clarity and length.

Texas Co-op Power

**TEXAS CO-OP POWER VOLUME 75, NUMBER 2** (USPS 540-560). *Texas Co-op Power* is published monthly by Texas Electric Cooperatives (TEC). Periodical postage paid at Austin, TX, and at additional offices. TEC is the statewide association representing 75 electric cooperatives. *Texas Co-op Power's* website is TexasCoopPower.com. Call (512) 454-0311 or email editor@TexasCoopPower.com. **SUBSCRIPTION PRICE** is \$4.20 per year for individual members of subscribing cooperatives and is paid from equity accruing to the member. If you are not a member of a subscribing cooperative, you can purchase an annual subscription at the nonmember rate of \$7.50. Individual copies and back issues are available for \$3 each. **POSTMASTER:** Send address changes to *Texas Co-op Power* (USPS 540-560), 1122 Colorado St., 24th Floor, Austin, TX 78701. Please enclose label from this copy of *Texas Co-op Power* showing old address and key numbers. **ADVERTISING:** Advertisers interested in buying display ad space in *Texas Co-op Power* and/or in our 30 sister publications in other states, contact Elaine Sproull at (512) 486-6251. Advertisements in *Texas Co-op Power* are paid solicitations. The publisher neither endorses nor guarantees in any manner any product or company included in this publication. Product satisfaction and delivery responsibility lie solely with the advertiser.

© Copyright 2018 Texas Electric Cooperatives, Inc. Reproduction of this issue or any portion of it is expressly prohibited without written permission. Willie Wirehand © Copyright 2018 National Rural Electric Cooperative Association.



## HAPPENINGS

# See What Real Cowboys Do

Working cowboys test their skills at the **BIG BEND RANCH RODEO, AUGUST 10-11** at Sul Ross State University in **ALPINE**.

The rodeo, sanctioned by the Working Ranch Cowboys Association, provides participating cattle workers an opportunity to educate the public about the everyday work of a ranch. The rodeo includes ranch bronc riding, cattle sorting, cattle doctoring, wild cow milking and calf branding.

The Big Bend winner advances to the WRCA World Championship Ranch Rodeo in November in Amarillo. Proceeds from the Big Bend Ranch Rodeo go toward scholarships at Sul Ross State.

**INFO ▶ (432) 364-2696, [bigbendranchrodeo.com](http://bigbendranchrodeo.com)**

### WEB EXTRAS

▶ Find more happenings online.



## ALMANAC

## Heck of a Comment

**The words** of Davy Crockett, the American folk hero who died defending the Alamo, live on as a pointed message on coffee mugs, T-shirts and other knickknacks: "You may all go to hell, and I will go to Texas."

**Consider** the backstory of that comment on the anniversary of Crockett's birth—August 17, 1786. Here's an excerpt from the April 9, 1836, edition of *Niles' Weekly Register* in Baltimore, which chronicled national history much as *The New York Times* does today:

**"A gentleman** from Nacogdoches, in Texas, informs us, that, whilst there, he dined in public with col. Crockett, who had just arrived from Tennessee. The old bear-hunter, on being toasted, made a speech to the Texians, replete with his usual dry humor. He began nearly in this style: 'I am told, gentlemen, that, when a stranger, like myself, arrives among you, the first inquiry is—what brought you here? To satisfy your curiosity at once to myself, I will tell you all about it. I was, for some years, a member of congress. In my last canvass, I told the people of my district, that, if they saw fit to re-elect me, I would serve them as faithfully as I had done; but, if not, they might go to h\_\_\_, and I would go to Texas. I was beaten, gentlemen, and here I am.' The roar of applause was like a thunder-burst."



## WORTH REPEATING

*“Somewhere out in this audience may even be someone who will one day follow my footsteps and preside over the White House as the president’s spouse. I wish him well!”*

—FORMER FIRST LADY BARBARA BUSH, who died April 17 in Houston



## WEATHER WATCH

# Never Again, Harvey

**HARVEY HAS BEEN RETIRED** from the rotating list of hurricane names by the World Meteorological Organization, as were Irma, Maria and Nate—all monster hurricanes in 2017. Harvey struck the Texas coast August 25 as a Category 4 storm with 132 mph winds, killing 68 people and dumping historic amounts of rain on the Houston area. It caused \$126 billion in damage, second only to Katrina in U.S. history.

**THE RETIRED NAMES** have been replaced with Harold, Idalia, Margot and Nigel. Nations hit hard by hurricanes can request the WMO retire names. Each hurricane season, which runs June 1–November 30, storms are named, in alphabetical order, based on lists that get recycled every six years.

## MARK YOUR CALENDAR

# Don't Be Left Out

**August 13 is International Left-Handers Day.** Roughly 10 percent of people are left-handed, according to Chris McManus, a University College London researcher who wrote a book chapter on the history and geography of left-handedness.

## CO-OPS IN THE COMMUNITY

# BRINGING LIGHT TO BOLIVIA

In November, 16 lineworkers from six Texas electric cooperatives—Bartlett, Bluebonnet and Pedernales ECs; CoServ; Mid-South Synergy; and United Cooperative Services—built 6 miles of power lines to bring electricity for the first time to 147 homes in the rural Bolivian villages of Batraja, Jerico and San Antonio de Maty.

To help fund the project, the National Rural Utilities Cooperative Finance Corporation presented a \$35,000 grant to the co-ops in February.

“It was an amazing adventure,” said Bo Williams, Mid-South operations VP, who led the expedition. “It was hot for sure. It rained every day—but the people there made it all worthwhile. They were very appreciative and wanted to help every way they could.”



United Cooperative Services linemen Brody Weems, left, and Chase Noland pose with a Bolivian child.

# All the State's a Stage

BY CLAYTON STROMBERGER

If we could, like Puck in *A Midsummer Night's Dream*, “put a girdle round about the earth / In forty minutes,” and zip around the Lone Star State over summer and fall evenings, O, the Shakespeare we would hear and see!

*A dozen festivals, all alike in dignity,  
In fair Texas, where we lay our scene,  
From famous texts, break to new creativity ...*



We begin in the West Texas city of Odessa. As the heat waves rise, is that a shimmering vision of Shakespeare's Globe we see, sitting in the land of oil fields and Friday night lights? It is! The Globe of the Great Southwest, which, thanks to the vision and persistence of a brilliant high school teacher, appeared in the Llano Estacado a full 30 years before London put up its rebuilt Globe. Today, Odessa's Globe Theatre hosts performances by the Odessa Shakespeare Festival.

Next, we fly west to El Paso and spy a group of local actors performing outdoors at Chamizal National Memorial, within shouting distance of the Rio Grande. As the players strut and fret their hour upon the stage with a touch of twang in their iambic pentameter, we soar from thence over parks filled with families sitting on picnic blankets and watching Shakespeare festivals in Dallas, Houston and Austin.

We hear comic prose, stirring verse and laughter along the



Riverwalk in San Antonio, along the Concho in San Angelo and under a canopy of stars in the Hill Country nook of Wimberley, as well as on college campuses in Fort Worth and Kilgore. Last, above the gently rolling countryside of Winedale, we spy an old open-sided hay barn in the twilight, orange light spilling from inside, and we hear a voice cry out, in a timeless moment after the onstage murder of Julius Caesar:

*How many ages hence  
Shall this our lofty scene be acted over  
In states unborn and accents yet unknown!*

MACEY: MARY RATH, HENRY V: ROBERT MONCKIEFF



## THE HISTORY, MYTHS AND WILD SPIRIT OF TEXAS PROVIDE FERTILE GROUND FOR SHAKESPEARE PERFORMANCES



When it comes to the immortal Sweet Swan of Avon, all the state's a stage. This is remarkable when you consider that Shakespeare was born almost four decades after Álvaro Núñez Cabeza de Vaca, shipwrecked near Galveston in 1528 like a character out of *The Tempest*, became the first European to travel into the interior of Texas and wander amid its indigenous people. How did this Londoner from the time of Queen Elizabeth become our favorite playwright for a Texas midsummer night?

Shakespeare likely arrived in Texas first in an adventurer's satchel or a settler's trunk. As improbable as it might seem today,

**Opposite: *Macbeth* at EmilyAnn Theatre & Gardens in Wimberley. Above: Shakespeare at Winedale presents *Henry V*.**

Shakespeare was a favorite of all social classes as America entered the 19th century, according to eminent Shakespeare scholar James Shapiro.

"There is hardly a pioneer's hut which does not contain a few odd volumes of Shakespeare," wrote French diplomat Alexis de Tocqueville after his travels through the United States in 1831. Children learned Shakespeare's verse from the ubiquitous McGuffey Readers, which began publication in 1836. Shake-

Shakespeare's plays—primarily the tragedies—were constantly in demand at theaters and opera houses and held their own against melodramas and farces. In October 1835, when James Butler Bonham organized a rally in Alabama to support Texas independence, he held it at the Shakespeare Theater in Mobile, a bustling town that held its first Shakespearean performance more than a decade earlier. Even Sam Houston knew his Shakespeare and quoted him often.

"Scholars and historians have now learned that language and dialect was very different during Shakespeare's time than we thought," says Bridget Farias Gates, artistic director of the EmilyAnn Theatre & Gardens in Wimberley. "Many consider it to be closer to the Texas dialect than to British. So, in a romantic way, this means Texans deliver Shakespeare more closely to original practice than most would think.

Richard already had two Mexican wives in San Antonio. "Nothing daunted at this public accusation of polygamy," Jefferson recalled decades later, "'Pud' pressed his suit with ardor."

In Texas' early days, even soldiers performed Shakespeare, partly to stave off boredom. In the winter of 1846, shortly after Texas had joined the union, 4,000 troops of the United States Army under the command of Gen. Zachary Taylor were stationed near the village of Corpus Christi in preparation for the conflict that would later become known as the Mexican-American War.

While waiting for orders, the soldiers assembled at the Union Theater, large enough to hold 800, and began rehearsals for

**From left: *Romeo and Juliet* at Wimberley's EmilyAnn Theatre & Gardens. *Richard III* at the Houston Shakespeare Festival. The Texas Shakespeare Festival Roadshow cast performs *Shakespeare's Greatest Hits* at Odessa's Globe Theatre with help from an audience member.**



## "Shakespeare would have loved Texas, both for its own

"I also like to think that the wide expanse of Texan land and the more laid-back nature of the Texan way of living is a closer representation to Shakespeare's country folk characters," she says.

The first notable professional performance of a Shakespeare play in Texas was held February 12, 1839, in Houston, when one Mr. Lewellen, who had scored a big hit in St. Louis with an equestrian melodrama co-starring his horse, Mazeppa, assayed the title role in *Othello*.

Competing theaters were built in Houston before the city's first church; established actors arrived by boat from New Orleans. Theaters attracted a rough-and-tumble crowd looking for diversion—and not necessarily accustomed to the niceties of high culture. Touring actor Joseph Jefferson recalled in his autobiography that during one mid-1840s portrayal of *Richard III* by an aging local troupier named "Pudding" Stanley in Houston, a patron interrupted Richard's wooing of Lady Anne to warn Anne that

*Othello*. Out of necessity, as in Shakespeare's London, men often played the female roles. James Longstreet, later a leading general in the Confederate Army, was up for the part of Desdemona, young wife of the noble Moor, but was deemed too tall. Longstreet's good friend, young Ulysses S. Grant, nicknamed "Little Beauty" for his feminine good looks, took over the role, but eventually a professional actress was hired and brought in because the soldier playing Othello, as Longstreet later recalled, just could not work up the "proper sentiment" while gazing upon Grant.

After the Civil War, as Texas' cities and towns began to develop civic traditions, the next wave of interest in Shakespeare came not from touring actors but from local citizens, especially women, with a focus on the communal enlightenment of group reading and discussion rather than performance. During the first half of the 20th century, there were at least 27 Shakespeare clubs meet-

ROMEO AND JULIET: SCOT BRINKLEY; RICHARD III: FOREST PHOTOGRAPHY; GLOBE THEATER: STEVE GOFF



ing in the state, from Abilene and Calvert to Waxahachie and North Zulch; many continue proudly to this day. That same democratic impulse led to the spread of community theaters in the early 20th century as the touring system of the barnstorming-actor days faded. In the 1970s, the ripple effect from Joseph Papp's Free Shakespeare in the Park in New York City led to a wave of park-based festivals around the state.

"Shakespeare would have loved Texas, both for its own energy and spirit and as a setting," says Jon Mark Hogg, president of the board of directors of Be Theatre and producer for Shakespeare on the Concho. "So many of his works are set in historic or myth-

cal Center near Round Top and meet the legendary Miss Ima Hogg, who had restored the Winedale property, including a historic stagecoach inn, and donated it to UT in the late 1960s.

Hogg directed Ayres to peek into the property's old hay barn, with its clay floor and handcarved cedar beams. "I want you to do Shakespeare in that barn," Hogg informed him, and three weeks later, Ayres brought his first class. Now, the Shakespeare at Winedale program is one of the leading Shakespeare-through-performance programs in the country, with UT students studying and performing three plays each summer. Ayres, a professor emeritus, founded and continues to lead Camp Shakespeare,



energy and spirit and as a setting."

ical places. The history, myths and wild spirit of Texas, both past and present, would have been fertile ground for the Bard."

On the educational front, Texas scored a coup in 1946 when legendary British director B. Iden Payne, who previously had led the Shakespeare Memorial Theatre in Shakespeare's hometown, Stratford-upon-Avon, came to the University of Texas as a guest professor in one of the nation's first collegiate drama departments.

One of the country's more unique venues for Shakespeare, the Winedale Theatre Barn, came about through a Texas miracle. In the fall of 1970, James B. Ayres, then an associate professor of Shakespeare at the University of Texas, happened to visit the Winedale Histori-

residential summer camps for children ages 11–16 who perform an entire play at Winedale at the end of each session.

The Shakespeare at Winedale logo perfectly captures this long love affair between a poet and a place. Known as "Cowboy Willie," it depicts Shakespeare wearing a cowboy hat and a bandana, chewing a piece of straw, a wad of chewing tobacco bulging in his cheek. A few years back, the program printed T-shirts that read: "Rich History. Vast Countryside. Family Feuds. Shakespeare would have loved Texas."

No doubt. In the meantime, we remain grateful for the gift of his words and characters and the chance to bring them to life. To lift a line from the noble Moor Othello, who was likely the first Shakespearean tragic hero to grace a Texas stage: He hath done the state some service, and we know't.

Clayton Stromberger is the outreach program coordinator for Shakespeare at Winedale.

#### WEB EXTRAS

► Read this story on our website to see a list of Shakespeare festivals and learn more about the Bard from the experts.

A dramatic desert landscape featuring large, dark boulders in the foreground. In the background, there are dark, layered mountains under a heavy, stormy sky with dark clouds. The ground is sandy and sparsely covered with small desert shrubs.

## WHY THE RAVEN CALLS THE CANYON





///

## BOOK EXCERPT CAPTURES

### LIFE OFF THE GRID IN BIG BEND

**F**rom 2006 to 2013, I divided my time between Marathon, 50 miles north of Big Bend National Park, and Fresno Ranch, an abandoned, off-grid, horse-and-mule operation located along the Rio Grande. Relatively uninhabited for almost a decade, the ranch encompassed more than 7,000 acres of springs, canyons and volcanic peaks. In 2006, absentee owners recruited Rodrigo Trevizo, a friend of mine and local state park superintendent, to keep an eye on the place. Two years later he moved into the ranch's adobe studio, determined to bring the rudimentary infrastructure of the ranch back to life. I joined him for weeks at a time, lending a hand to unearth the ranch's water system, repair livestock corrals and restore the solar power, all while adjusting to the day-to-day challenges of living off the grid. With Trevizo's help, Fresno became part of Big Bend Ranch State Park, at over 300,000 acres the largest state park in Texas.

Fresno Ranch was established in the 1900s as a 640-acre section bordered by the river at its confluence with Fresno Creek and present-day FM 170. During the 1980s, another 10 sections were added, including nine sections up Fresno Canyon and an additional mile of riverfront. At one point, Fresno also covered the Picachos, a 5,000-acre ranch directly across the river in Mexico.

Ancient campsites and historic ruins litter the desert terrain around Fresno, sharing a robust cultural history with defunct mercury mines and remnant candelilla wax camps. A collapsed magma dome, so large it can be detected from space, dominates much of

**These boulders were placed in alignment at Fresno Ranch decades ago using a tractor.**

the ranch's northeastern horizon. Among Fresno's hand-built attributes, a 2,000-square-foot adobe painting studio lies at its heart, constructed for the late Jeanne Norsworthy, Texas artist and granddaughter of George B. Dealey, publisher of the *Dallas Morning News*.

TEXT AND PHOTOS BY E. DAN KLEPPER

///



**Left: Chupadera Spring in the Cienega Mountains. Below: The author gets a haircut at Fresno Ranch.**

///

**F**resno's natural world shares the allure of wild places found across the entire Big Bend region. The inscrutability of this West Texas country inspires life-long appreciation for its rare natural beauty as well as an unorthodox creativity, resulting in artistic endeavors like this one, and often rousing those who hail from gentler places to abandon creature comforts and move to the Big Bend for good. Here, adventurers, artists, and writers live in stone ruins, campers, and makeshift shelters, contending with extreme summer temperatures, winter freezes and venomous wildlife like scorpions and rattlesnakes, all in an attempt to understand the enigma possessed

by mountains and canyons scattered throughout hundreds of uninhabited miles. Much of the territory's draw may reside in the region's volcanic upheaval, conjured from the planet's bedrock, and a geography lit by an ever-changing light, as cryptic as the human psyche. With time and consideration, an artist can thrive here on conclusions that reveal as much about the land as our own internal landscapes.

Writer and photographer **E. Dan Klepper** works from Marathon. *Why the Raven Calls the Canyon* was published by Texas A&M University Press in 2017.



#### WEB EXTRAS

► Read this story on our website to see a slideshow of Fresno Ranch.

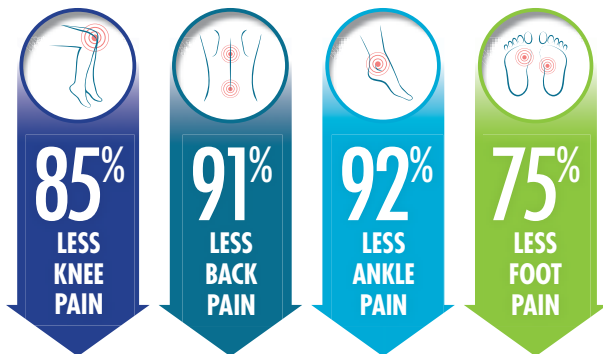


# LIVE LIFE WITHOUT PAIN

Plantar Fasciitis • Arthritis • Joint Pain • Heel Spurs • Back & Knee Pain



PATENTED VERSOSHOCK<sup>®</sup> SOLE  
SHOCK ABSORPTION SYSTEM



\*Results of a double-blind study conducted by Olive View UCLA Medical Center.

*“I’ve had lower back pain for years. Walking in these shoes was life changing for me. I feel like I’m walking on air.”*

– Bill F.

Enjoy the benefits of exercise  
with proven pain relief.

- ✓ Ultimate Comfort
- ✓ Renewed Energy
- ✓ Maximum Protection
- ✓ Improve Posture

## G-DEFY ION \$150

X-WIDE  
WIDTH  
AVAILABLE

Men Sizes 7.5-15 M/W/XW

- Black TB9025MBB
- Red/Gray TB9022MRG

Women Sizes 6-11 M/W/XW

- Black/Blue TB9022FTL
- Gray/Teal TB9022FGU



**\$30 OFF**  
YOUR ORDER

**Promo Code MQ8HKJ4**

[www.gravitydefyer.com](http://www.gravitydefyer.com)

Expires November 30, 2018

Free Exchanges • Free Returns

**100% Satisfaction Guaranteed**

Call 1(800) 429-0039

Gravity Defyer Corp.

10643 Glenoaks Blvd. Pacoima, CA 91331



VersoShock<sup>®</sup> U.S Patent #US8,555,526 B2. This product has not been evaluated by the FDA. Not intended to treat, cure or prevent any disease. \$30 off applies to orders of \$100 or more for this limited time offer. 9% CA sales tax applies to orders in California. Shoes must be returned within 30 days in like-new condition for full refund or exchange. Credit card authorization required. See website for complete details.

# FLIP FLIP HOORAY!

*A perfect symbol of fun in the sun for only \$79*

Here's a memorable beach moment: You're basking in the warm sun, toes in the sand, letting the gentle turn of the foam-capped waves lull you into a state of complete relaxation. As your eyes scan the endless horizon of blue on blue, you're rewarded with a school of dolphins making their way across the sea. There's no denying their signature shape as they leap from the water. If you don't see anything else extraordinary the rest of day, you can take solace knowing you've witnessed one of nature's most playful and intelligent creatures in their natural habitat.

Why not recreate that special toes-in-the-sand moment with our **Blue Topaz Dolphin Pendant**? The beloved sea mammal has been captured mid-jump in sterling silver. And, tucked into its fins is a full two carats of shimmering blue topaz.

Nothing captures the shimmering color of the ocean in the midday sun like blue topaz. With its sparkling clear blue color and high refractive index, blue topaz is one of the top-selling blue gemstones. And with our special price, you have quite the catch.

**Satisfaction guaranteed or your money back.** Enjoy the **Blue Topaz Dolphin Pendant** for 30 days. If it doesn't pass the test swimmingly, send it back for a full refund of the item price.

**Limited Reserves.** A full two carats of genuine blue topaz set in sterling silver for this price is as rare as a dolphin sighting. We cannot guarantee availability for long. Call today!

**Limited to the first 1900 responders to this ad only!**

*A full two carats of shimmering blue topaz set in sterling silver*

To show exquisite details, pendant shown is not exact size. Chain sold separately.

*"Enormously popular, significantly intelligent and scientifically sophisticated, dolphins are amidst the most beloved animals among people."*

— Dolphins-World



*"This sterling silver dolphin is absolutely beautiful and the blue topaz is like the color of the ocean"*

— Vivian, Cabool, MO

† Special price only for customers using the offer code versus the price on Stauer.com without your offer code.

**Stauer®** 14101 Southcross Drive W., Ste 155, Dept. DPP157-01, Burnsville, Minnesota 55337  
**www.stauer.com**

**Blue Topaz Dolphin Pendant** non-offer code price ~~\$395~~†

Offer Code Price Only **\$79** + S&P **Save \$316!**

You must use the insider offer code to get our special price.

**1-800-333-2045**

**Your Insider Offer Code: DPP157-01.**

Please use this code when you order to receive your discount.



• 2 ctw blue topaz; ½ ctw lab-created DiamondAura® • .925 sterling silver setting • Sterling silver chain sold separately

*Stauer...Afford the Extraordinary.®*



# RECIPE CONTEST

## WIN \$100

Submit your best recipes for a chance to win \$100 and a Texas Co-op Power apron!



### Upcoming Contests

#### JANUARY ISSUE

Sunny Citrus

Deadline: August 10

#### FEBRUARY ISSUE

Cozy Casseroles

Deadline: September 10

ENTER TODAY AT

**TexasCoopPower.com**

# Financing the *Growth* of your Poultry Operation

- ★ Long-term fixed rates reducing interest rate risk
- ★ Opportunity to earn back money through our Patronage Program
- ★ Loan officers with understanding and experience in the industry



NMLS # 470323 | [www.legacyaca.com](http://www.legacyaca.com) | 866-885-3522

**Sulphur Springs**  
303 Canally  
Sulphur Springs, Texas 75482  
903-885-9566

**Canton**  
335 West Dallas  
Canton, Texas 75103  
903-587-2251

**Gilmer**  
1261 HWY 211 South  
Gilmer, Texas 75645  
903-734-5550

**Kaufman**  
201 West Mulberry  
Kaufman, Texas 75142  
972-932-3610

**Longview**  
2002 Judson Road, Suite 204  
Longview, Texas 75605  
903-307-9173



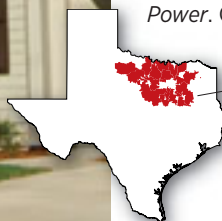
## If North Texas Is Your Market, We've Got You Covered.

Target customers close to home with the North Texas advertising section of *Texas Co-op Power*.

We know that now, more than ever, it makes sense to target your audience with a trustworthy name—a name like *Texas Co-op Power*, which creates more advertising options for regional and local businesses like yours.

Our North Texas advertising section targets homeowners living around Texas' largest metropolitan area. With a regional circulation of 527,000 and a readership of 1,212,100, *Texas Co-op Power* delivers a huge audience that's loyal and responsive.

Be part of a statewide magazine—without the statewide cost. Reach North Texas customers with *Texas Co-op Power*. Call or email today.



**NORTH TEXAS AUDIENCE**  
Circulation 527,000 • Readership 1,212,100

# TEXASCOOPPOWER

**Call:** Elaine Sproull at (512) 486-6251  
**Email:** [advertising@TexasCoopPower.com](mailto:advertising@TexasCoopPower.com)

# More Than 80 Years Later, You Still Have the Power



MESSAGE FROM  
**GENERAL MANAGER/CEO JERRY BOZE**

**IT'S BEEN MORE THAN 80 YEARS SINCE THE RURAL** electrification program began. To survive—and even prosper—over that period of time takes considerable strength. The fact that electric cooperatives are alive and well today speaks volumes of the many people who have protected the rights and interests of co-op members in

Austin and Washington, D.C.

Electric cooperatives have been offering consumers a real choice from the day our doors first opened. The members get to decide how the business is run and what

services are offered. Under the watchful eye of locally elected boards of directors, electric cooperatives focus on delivering high-quality, reliable and affordable service every day to the people and businesses they serve. Your cooperative still is committed to making a difference.

While your cooperative works to keep electricity affordable and reliable by improving the efficiency of its electric system and operations, considering

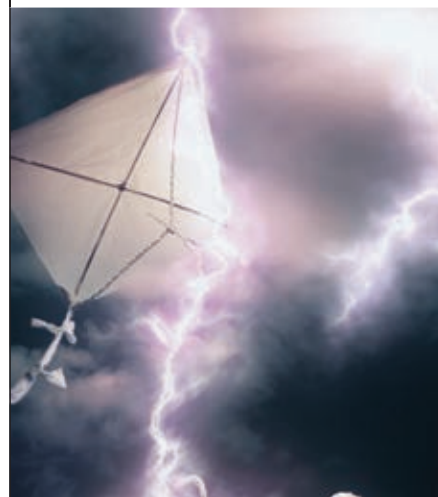


**Electrification added the possibility of refrigeration both in homes and stores, as in this historic photo from a store in Peeltown in southern Kaufman County.**

new resources and staying politically active, you can do your part by using energy efficiently at home and work. **Here are a few easy ways to trim your energy use:**

- ▶ Caulk or weatherstrip windows and doors. A typical home can lose as much as one-third of its conditioned air through leaks.
- ▶ Install a programmable thermostat and change filters regularly. About half of your electric bill is spent heating and cooling your home.
- ▶ Wash clothes in cold water.
- ▶ Wash only full loads of dishes and clothes.
- ▶ Add more insulation in your attic. Your home can lose energy through a poorly insulated roof or walls.
- ▶ Turn off lights, appliances and electronics when not in use.

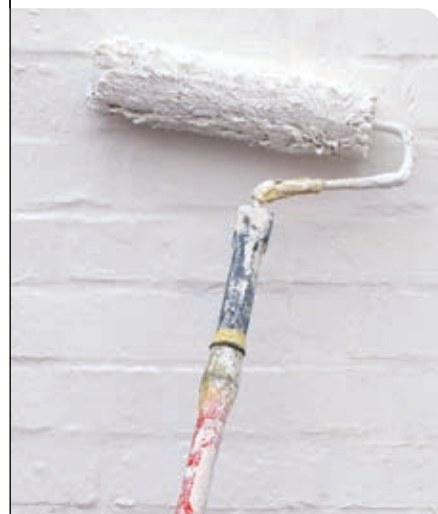
Life may be dramatically different from what it was 80 years ago, but one thing hasn't changed: Trinity Valley Electric Cooperative is here to serve you.



FERGREGORY | ISTOCK.COM

## Did You Know?

Benjamin Franklin didn't discover electricity, but he did prove that lightning is a form of electrical energy.

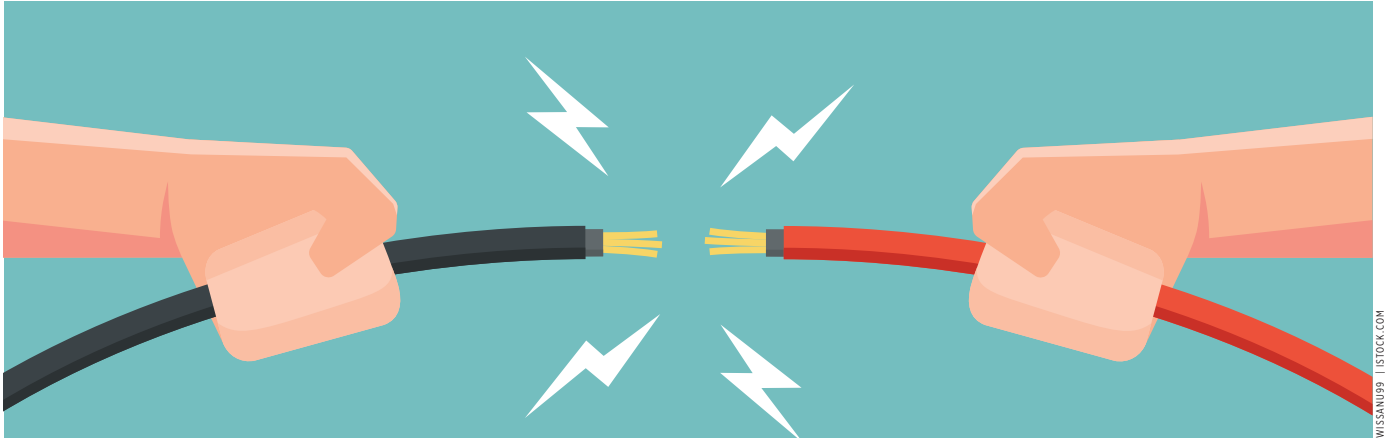


DEEPBLUE4YOU | ISTOCK.COM

## Power Tip

Here's a simple, energy-saving trick for your home: Get painting. Light paint colors on walls and ceilings reflect more light, making rooms brighter and reducing the need for high-wattage light bulbs.





## Knowing the Truth Can Save Your Life

**ELECTRICITY IS A WONDERFUL PRODUCT THAT MOST OF US** couldn't dream of doing without. It is the hardest-working, cleanest and safest form of energy available.

But keeping electricity safe requires knowledge—knowing when electricity is safe and when it isn't. Here's a guide.

**FICTION: It is safe to work on a machine or appliance if it is turned off.**

**FACT:** Power to the appliance should be disconnected completely—by unplugging it or turning off the circuit breaker—before any maintenance or repair is done.

**FICTION: Low-voltage current, used in homes, cannot hurt me.**

**FACT:** Low voltage can kill you. Normal household current has many times the minimum amperage necessary to halt the function of your heart and lungs.

**FICTION: A power line on the ground is dead if it isn't moving, sparking or popping.**

**FACT:** Never be fooled by appearances. Many times, wires may give every indication of being dead when the opposite is true. Do not try to move any wire using rope or wood—or anything else. Stay at least 35 feet away and notify your electric cooperative immediately.

**FICTION: All power lines are insulated.**

**FACT:** The majority of power lines are NOT insulated, and those that are insulated may have degraded due to weather and other factors. Assume that no power line is safe to go near.

**FICTION: If a fuse continues to blow, maybe I just need a larger one.**

**FACT:** If a fuse is blowing repeatedly (or a circuit breaker keeps tripping), the circuit should be checked by an electrician. Replacing a fuse with one of a higher amperage could result in a fire.

**FICTION: I can work around electricity safely if I wear rubber boots.**

**FACT:** Common rubber boots offer almost no protection at all. Most rubber boots contain lampblack, which conducts electricity.

**FICTION: Wood is an insulator, and wooden ladders cannot conduct electricity.** 57399002

**FACT:** Wood is a poor conductor, but it can conduct electricity, especially when wet or when it has metal attachments. Using a wooden ladder when working with live electrical wiring is not a guarantee of safety.

The folks at your electric cooperative know the facts—and the fiction—about electric safety and want you to know, too.

## SAVE THE DATE!

### TVEC ANNUAL MEMBERSHIP MEETING

OCTOBER 11, 2018 • REGISTRATION AT 6 P.M.

CANTON CIVIC CENTER • CANTON, TEXAS

Watch for the official notice and ballot for director elections in the September issue of *Texas Co-op Power*.

# Peachy Keen

*From your backyard or from area orchards, fresh peaches offer the taste of summer*

It is a bit ironic that August is “Peach month,” as declared by President Ronald Reagan in 1982. While the best, sweetest peaches are certainly coming off the trees this month, by the third week you may have a hard time finding a fresh-picked peach to enjoy.

It would be a great month to start planning your own harvest for summers to come however, and two of Kaufman County’s top peach professionals have some tips for success.

Dale Ham started Ham Orchards near Terrell in 1979 as a side business while he was a captain at Richardson Fire Department. With 27 acres of land and fewer than 200 trees, Ham acted on a hunch that demand would be there for the fruit.

“I just knew that peaches were sweet and people would buy them,” he said. “We went around to all of the Wolf Nurseries at the time and bought every tree we could get. I didn’t know much about the different varieties at the time, but I planted them all and that is how we started.”

Ham Orchards has grown into a destination for locals and travelers alike, with a devoted clientele who visit for the peaches, as well as barbecue (peach pulled pork), ice cream, fresh baked goods, fresh produce, fudge and a variety of tasty treats.

According to Ham, his now 200-acre operation is barely large enough to keep up with the demand.

At the southern end of Kaufman County, Robert and Cindy Page of Peachy Page Farm in Scurry have been developing their orchard since 2009. With the addition of a country store

this summer, the Pages also have begun offering locally grown produce, ice cream and other treats, and the orchard itself is available as a unique space for events including art shows, weddings and group dinners among the trees.

“Everything is homemade, in the store and even for our dinners,” Robert Page said.

“It is a unique surrounding and people have really enjoyed the unique experience of being out here.”

With almost 50 years of peach growing experience to call on, it is clear that growing fruit can be a very reward-

ing experience, but it is also a lot of work. Planting, pruning, spraying, watering and picking are a lot of effort to take into consideration to maximize your enjoyment of the fruits.





## Choosing Varieties

There are many varieties of peaches, and each type has its own taste and texture characteristics. Cling peaches, which hold tightly to the pit, ripen earlier in the summer, while free-stone varieties ripen in July and August and are considered the sweetest.

PEACH VARIETIES & RIPENING DATES			
CLING		FREESTONE	
VARIETY	RIPENING DATE	VARIETY	RIPENING DATE
SPRINGGOLD	MAY 13 - MAY 26	GALA	JUNE 13 - JUNE 27
REGAL	MAY 14 - MAY 25	SENTINEL	JUNE 20 - JULY 6
EZZIE'S SWEET (HAM VARIETY)	MAY 18 - MAY 29	R. L. SPECIAL	JUNE 24 - JULY 7
EMPRESS	MAY 22 - JUNE 1	EARLY HARVESTER	JUNE 24 - JULY 5
SUNBRITE	MAY 22 - JUNE 2	HARVESTER	JUNE 27 - JULY 9
RUBYPRINCE	MAY 22 - JUNE 1	CARY MAC	JUNE 28 - JULY 10
GOLDPRINCE	MAY 22 - JUNE 2	MAJESTIC	JUNE 30 - JULY 13
JUNEGOLD	MAY 22 - JUNE 3	REDGLOBE	JULY 2 - JULY 16
SURECROP	MAY 22 - JUNE 8	LORING	JULY 5 - JULY 26
GARNET BEAUTY	MAY 22 - JUNE 15	BOUNTY	JULY 5 - JULY 21
	JUNE 11 - JUNE 21	GLORY	JULY 10 - JULY 26
WHITE FLESH		RUSTON RED	JULY 12 - JULY 26
VARIETY	RIPENING DATE	DIXIELAND	JULY 14 - JULY 28
SUGARMAY	JUNE 9	CRESTHAVEN	JULY 15 - JULY 29
SNOWBRITE	JUNE 19	INDIAN RED	JULY 20 - JULY 30
WHITE LADY	JUNE 26	SUNPRINCE	JULY 26 - AUGUST 5
WHITE RIVER	JULY 9	TAYLOR'S TREAT (HAM VARIETY)	JULY 30 - AUGUST 10
SUGAR GIANT	JULY 18	QUACHITA GOLD	JULY 31 - AUGUST 12
BELL OF GEORGIA	JULY 19		
SNOW GIANT	AUGUST 7		

Each peach variety will only give ripe fruit for about two or three weeks, so multiple types can lengthen your harvest.

"It really depends on mother nature, but the season basically runs from June 1 to mid-August," Page said. "We have six varieties and they follow each other, starting with the cling peaches and getting into the freestone peaches by mid-July."

## Pruning

Peach trees need pruning each year, keeping to a slight bowl shape and only 6-7 feet in height. This allows airflow and light into the middle of the tree and keeps the fruit at a pick-able height.

## Spraying

Many insects and diseases threaten peach trees and fruit. Commercially available insecticides and sprays are available to help keep trees healthy while keeping the fruit in good condition for eating. A regimen of spraying about every two weeks is required during the growing season, and additional spraying for fungus or wood boring insects may be needed at other times in the year.

"You can forget to spray one time and end up with worms," Ham said. "You don't want to kill the pollinators in the spring, but after that is a rigid spray schedule as weather permits."



Dale Ham of Ham Orchards shows the proper shape for pruning peach trees for the best harvest and healthy trees.

## Thinning

After the peach blossoms fall and fruit begins to appear, the peaches should be thinned to about one peach every 8-10 inches on the limbs. This allows the remaining fruit to grow larger. Without thinning, the limbs can become overburdened with too many small peaches and break.

## Picking

Ripe peaches are firm but with a slight "give" when pressed. Peaches continue to ripen after being picked, and over the course of a few days at room temperature can go from just right to too soft. Refrigeration slows the ripening process.

## Enjoying

Fresh from the tree may be ideal for enjoying peaches, but your harvest may yield more than you can consume. A quick search online or in your cookbook collection will give you a number of options for peach dishes, from desserts and baked goods to sauces and savory dishes.

Additional resources for growing peaches and other produce is available through your county Texas A&M Agrilife Extension Office including a peach tree pruning clinic and information session held each spring at Ham Orchards. Contact the Kaufman County Extension Office at (972) 932-9069 for more information.

## Peachy Destinations

### Ham Orchards

4 miles east of Terrell on U.S. Hwy. 80  
(972) 524-2028

Farm-to-Market store with fresh peaches, produce, baked goods, ice cream, fudge and other items.  
Barbecue by Eddie Deen.  
Open until August 18.  
hamorchard.com

### Peachy Page Farm

10800 County Road 4090  
Scurry, TX 75158  
(972) 989-2133

Country store with fresh peaches, locally grown produce, ice cream and other items. Scheduled events and orchard dinners available.  
peachypagefarm.com

## TEXAS DIVISION OF EMERGENCY MANAGEMENT

### Hurricane Preparedness Guidelines

Preparing for Hurricane Season: June 1–November 30

**EVACUATION PLANNING:** When a hurricane threatens, listen for instructions from local officials. When they call for an evacuation in your area, get going without delay.

► **Discuss evacuation plans** with your family **before** hurricane season, June 1–November 30. Make a checklist of what you need to do before you leave town and review it.

► **Monitor NOAA Weather Radio**, local TV and radio broadcasts during storm season.

► **Prepare an emergency supply kit** including: radio, flashlight, extra batteries, extra eyeglasses, bottled water, nonperishable food, dry clothes, bedding, insurance information, important documents, medications, copies of prescriptions and special products for babies, seniors, medically fragile family members and pets.

► **Learn evacuation routes** before storm season. When there's a hurricane in the Gulf, keep your gas tank as full as possible. Expect traffic delays in an evacuation.

► **Register with the State of Texas Emergency Assistance Registry online at [stear.dps.texas.gov](http://stear.dps.texas.gov) or dial 211 to register if you have a disability or medical needs, or if you simply do not have transportation.** Gulf Coast residents in evacuation zones who have a disability or medical needs who do not have friends or family to help or do not have transportation should register with STEAR in advance.

## DIVISIÓN DE ADMINISTRACIÓN DE EMERGENCIAS DE TEXAS

### Directrices para Huracanes

Preparando para la temporada de huracanes durante el 1 de junio hasta el 30 de noviembre

**EVACUACIÓN EN CASO DE HURACÁN:** Cuando exista una amenaza de huracán, escucha las instrucciones de funcionarios locales. Cuando llamen para una evacuación en su área, sálgase del área lo más pronto posible.

► **Discute los planes de evacuación** con su familia **antes** de la temporada de huracán, que comienza el 1 de junio hasta 30 de noviembre. Haga una lista de lo que usted debe hacer antes de salir de la ciudad y revísela.

► **Escuche la radio** y televisión durante la temporada de huracanes.

► **Prepare un equipo de emergencia** incluyendo radio, linterna, repuesto de baterías, anteojos extras, agua embotellada, alimentos no perecederos, ropa extra, ropa de cama, información de seguro, documentos importantes, medicinas, copias de recetas medicas y productos especiales para bebés, las personas mayores, miembros de la familia médicamente frágiles y animales domesticos.

► **Aprenda sus rutas** de evacuación antes de la temporada de huracanes. Cuando hay un huracán en el Golfo, mantenga el tanque de gasolina lleno. Este consiente de que habrá demoras de tráfico.

► **Puede registre con el State of Texas Emergency Assistance Registry** vía su sitio web: [stear.dps.texas.gov](http://stear.dps.texas.gov) o llamando al 211 para registrarse si usted tiene una discapacidad o necesidades médicas o si simplemente no tiene transporte. Los residentes de la Costa del Golfo en zonas de evacuación con una discapacidad o necesidades médicas quiénes no tienen amigos o familiares para ayudarlo o no tienen transporte debe registrarse con STEAR por adelantado.



TRINITY VALLEY ELECTRIC COOPERATIVE

A Touchstone Energy® Cooperative

Operating in Anderson, Dallas, Henderson, Hunt, Kaufman and Van Zandt counties

#### BOARD OF DIRECTORS

Howard Tillison, Chairman, District 6  
Carolyn Minor, Vice Chairwoman, District 1  
Jo Ann Hanstrom, Secretary, District 4  
Jerry Priest, District 2  
Paul Weatherford, District 3  
Edward Reeve, District 5  
David Lang, District 7

#### GENERAL MANAGER/CEO

Jerry B. Boze

#### Kaufman District Headquarters

1800 E. Highway 243, Kaufman

#### Athens District Office

909 W. Larkin St., Athens

#### Cedar Creek District Office

1012 W. Main St., Ste. 102  
Gun Barrel City

#### Wills Point District Office

582 N. Fourth St., Wills Point

#### Lobby Hours

Monday-Friday, 8:15 a.m.-4:45 p.m.



### Contact Us

For information during office hours and outages after hours

#### CALL US

(972) 932-2214 local or  
1-800-766-9576 toll-free

#### 24-HOUR AUTOMATED ASSISTANCE

1-800-720-3584

#### 24-HOUR OUTAGE REPORTING

1-800-967-9324

FIND US ON THE WEB AT  
[tvec.net](http://tvec.net)



Operation Round Up  
**SPOTLIGHT**  
Your donations are  
making a difference!

## Sharing the Love Grows Young Leaders

“Youth Empowering Youth” is the motto of the Sharing the Love Foundation, and that is exactly what Founder and Executive Director Marian Stewart wants to do. “My idea for this was to encourage youth to make an impact in the lives of others,” she said.

Stewart began her vision in 1981 as an employee with the Chicago Housing Authority, which was once one of the largest such agencies in the United States. Her 15 years at the organization built her skills as a youth community organizer, and she has dedicated her life to helping youth reach their highest potential.

“My dream was to make an impact with the youth in Texas communities, and in 2012 that became a reality,” Stewart said. Sharing the Love works in Kaufman and Van Zandt counties, with kids participating from Forney, Terrell, Kaufman, Crandall and Wills Point. Programs focus on leadership, health, education and sustainability.

The foundation promotes teen leadership, with mentors and “Young Ambassadors,” who are the building blocks for the program. The Young Ambassadors are junior high- and high school-age kids who implement community service projects put on by the foundation.

“We do a lot of community service,” said Laura Estrada a Young Ambassador past president. “One of my favorite community service projects was when we went Easter egg hunting with the children from the Kaufman Children’s Center—it was nice to go love on them and give them candy



Marian Stewart (far right) and Sharing the Love Foundation camp participants receive an Operation Round Up grant from TVEC PR Representative Laura Melton.

**Sharing the Love Foundation**  
**\$2,500**

because they haven’t seen that in a while.”

Other projects have included Turkey Trax, Senior Angel Tree and a Veterans 5K run that raised funds for the Forney Veterans of Foreign Wars post.

Even though community service is a big part of the Sharing the Love Foundation, it is all aimed at raising young leaders. The Young Ambassadors program encourages the kids to become mentors for younger children and their peers, embrace diversity, strive for higher education and to fulfill their civic duty by serving the community and planet. According to Stewart, the goal is, “to encourage them to reach their highest potential and to love themselves and others.”

For more information, visit [sharingthelove.org](http://sharingthelove.org)

**THE TVEC CHARITABLE FOUNDATION** recently awarded six grants totaling \$11,000. Recipients of the grants include the above and:

**East Texas Crisis Center**  
**\$3,500**

East Texas Crisis Center provides “safety, shelter and education for victims of family violence, sexual assault and other violent crime.” The center serves five counties including Henderson and Van Zandt.

**Murchison ISD PTO**  
**\$3,000**

The Murchison ISD Parent Teacher Organization supports students and educators in Murchison schools with free school supplies, volunteer work and teacher appreciation. The organization also is raising funds to upgrade playground equipment at the school.

**Friends of Riter C. Hulsey Library—Terrell**  
**\$2,000**

Friends of The Library at Terrell’s Riter C. Hulsey Public Library provide fund raising and volunteer support to enhance the library’s services. This includes support of the library’s popular summer reading program for kids.

## Win \$25 Just for Reading!

Somewhere, hidden on Pages 18-23, is a TVEC account number. Read closely. If the account number is yours, contact the Member Services Department by August 31 to receive a \$25 credit on your electric bill. Don’t miss out—you could be a winner!

Founded in 2013, the TVEC Charitable Foundation is an independent, nonprofit organization. The foundation was created to serve the community and help improve the quality of life for residents in our service area. **The foundation is funded entirely by donations from TVEC members who participate in Operation Round Up.** For more information, please call 1-800-766-9576 or visit [tvec.net](http://tvec.net).





# A Slice of Heaven

A Texas historian shares a quest for a personal favorite—Key lime pie

BY LONN TAYLOR

KEY LIME PIE IS A SCARCE ITEM ON MENUS in the Key lime-less Big Bend, but I am fond of it. So I was delighted to discover during my wife, Dedie's, and my recent winter ramble to Key West, Florida, that all 162 restaurants in Key West (a town of 27,000 people) serve Key lime pie.

It must be impossible to get a restaurant license in Key West without guaranteeing that Key lime pie will be on the menu. Even the Chinese restaurants serve Key lime pie. In addition, there are about a dozen hole-in-the-wall Key lime pie carryout places, most of them near the cruise ship dock on Mallory Square. That way, the several thousand cruise ship passengers who are disgorged every couple of days or so in the winter can munch on a slice as they trudge around buying T-shirts and glass octopi.

Key lime pie is a very simple combination of egg yolks, sweetened condensed milk, Key lime juice and pie crust, but there are hundreds of versions of it—most of them claiming to be the original. None of them are.

According to Tom Hambright, librarian of the Florida Keys Collection at the Monroe County Public Library and the go-to man on Key West history, the original Key lime pie was concocted in the late 19th century by Key West's sponge fishermen. They created it from supplies they carried on their boats, which often hovered over the sponge grounds for several days at a time. The spongers (called "hookers" in Key West vernacular) would pour canned sweetened condensed milk over stale Cuban bread that had been tamped into

the bottom of a coffee cup, add beaten egg yolks and squeeze in Key lime juice, which "cooked" the eggs in the same way that lime juice cooks ceviche. After sitting for five or six hours, the mixture was firmed up and considered delicious.

Key limes (*Citrus aurantifolia swingle*) are about the size of golf balls, and their skins are yellow with brown spots when they are ripe, in contrast to the larger, green Persian limes (*Citrus latifolia*) usually found in grocery stores. In the 1890s, boys sold them on the streets of Key West, chanting, "Key limes for sale fresh from the tree / A dozen for you and a nickel for me / Take 'em to the kitchen, put 'em in a pie / A little slice of heaven, my oh my."

At some point in the 1890s, the Key lime pie spread from the sponge fishermen's boats and into the mansion of a Key West ship chandler, William "Rich Bill" Curry, who would become Florida's first millionaire. Tradition, in the form of a printed recipe distributed by the Curry Mansion Inn, credits this transition to a woman known only as Aunt Sally, who cooked for the Curry family. David L. Sloan, a Key West chef and culinary historian who has written the definitive book on Key lime pies, *The Key West Key Lime Pie Cookbook*, has identified Aunt Sally as Sarah Jane Lowe, who was married to William Curry's son, Charles.

Here is Lowe's recipe, dated 1894: "Ingredients: 4 eggs separated, 1/4 cup key lime juice, 14-ounce can sweetened condensed milk, 1/3 cup sugar, pinch of cream of tartar, one eight-inch Graham cracker crust. Beat egg yolks until light and thick.



Blend in lime juice, then milk, stirring until mixture thickens. Pour mixture into pie shell. Beat egg whites with cream of tartar until stiff. Gradually beat in sugar until glossy peaks form. Spread egg whites over surface of pie to edge of crust. Bake in 350-degree oven until golden brown, about 20 minutes. Chill before serving.”

Lowe’s recipe contained several improvements over the sponge fishermen’s. First, it called for baking the pie in an oven. There are still traditionalists who argue that true Key lime pie is unbaked, but fears of salmonella (and of losing a restaurant license) have meant that most Key lime pies served in restaurants have been in an oven.

Another of Lowe’s innovations was the substitution of graham crackers for stale Cuban bread for the crust, although Key West now is divided into two factions on this matter: graham cracker crusters and pastry crusters. Sloan’s book gives recipes for both, as well as for crusts incorporating s’mores, peanut butter, Kool-Aid, Oreo cookies, pretzels, pecans, chile pequins, thin mint cookies, vanilla wafers, coffee, rum and bacon.

Lowe’s third innovation was to top the pie with meringue made from the egg whites. As with the crusts, there are two topping factions: the meringuers and the whipped creamers. The meringuers accuse the whipped creamers of taking

the easy way out because it requires patience and skill to create a towering 6-inch meringue above a 2-inch pie. The whipped creamers retort that their toppings are more accommodating to so-called secret ingredients, such as Tabasco, raspberries, rum, eggnog, agave nectar and Kahlúa.

I cannot say that I have sampled the Key lime pie in all of Key West’s 162 restaurants, but I will say that my favorite is the one served at the Conch Flyer, the restaurant at Key West’s airport. Try that on the last day of your visit and you will not be disappointed.

Historian **Lonn Taylor** lives in Fort Davis. Reach him at [taylorlw@fortdavis.net](mailto:taylorlw@fortdavis.net).





Please allow 4-6 weeks for delivery.

## Beachcombing at home.

**Texas Co-op Power** presents an illustrated *Seashells of Texas* poster by artist Aletha St. Romain, 20x16 inches, suitable for framing.

Order online at [TexasCoopPower.com](http://TexasCoopPower.com) for only \$20 (price includes tax, shipping and handling).

**Bonus offer:** Get 2 posters shipped to the same address for just \$30.

**\$20  
or 2 for  
\$30**

From the publishers of **TEXAS CO-OP POWER**



## Give friends and family the Best of Texas.

**Texas Co-op Power** presents a collection of best-loved recipes from two of our most popular cookbooks ever, the *Typically Texas Cookbook* and *The Second Typically Texas Cookbook*.

**This cookbook** is filled with more than 700 recipes, including more than 300 dessert recipes.

Order online at [TexasCoopPower.com](http://TexasCoopPower.com) and put *The Best of Typically Texas Cookbook* in your kitchen for only \$29.95 (price includes tax, shipping and handling).

To order by mail, send a check or money order payable to TEC for \$29.95 to Best of Typically Texas Cookbook, 1122 Colorado St., 24th Floor, Austin, TX 78701.

From the publishers of **Texas Co-op Power**

Please allow 4-6 weeks for delivery.

**\$29.95**





*"I've gotten many compliments on this watch. The craftsmanship is phenomenal and the watch is simply pleasing to the eye."*

—M., Irvine, CA

*"GET THIS WATCH."*

—M., Wheeling, IL

**Back in Black:**  
The New Face of  
Luxury Watches  
"...go black. Dark  
and handsome  
remains a classic  
for a reason"  
— Men's Journal

## I'LL TAKE MINE BLACK...NO SUGAR

In the early 1930s watch manufacturers took a clue from Henry Ford's favorite quote concerning his automobiles, "You can have any color as long as it is black." Black dialed watches became the rage especially with pilots and race drivers. Of course, since the black dial went well with a black tuxedo, the adventurer's black dial watch easily moved from the airplane hangar to dancing at the nightclub. Now, Stauer brings back the "Noire", a design based on an elegant timepiece built in 1936. Black dialed, complex automatics from the 1930s have recently hit new heights at auction. One was sold for in excess of \$600,000. We thought that you might like to have an affordable version that will be much more accurate than the original.

**Basic black with a twist.** Not only are the dial, hands and face vintage, but we used a 27-jeweled automatic movement. This is the kind of engineering desired by fine watch collectors worldwide. But since we design this classic movement on state of the art computer-controlled Swiss built machines, the accuracy is excellent. Three interior dials display day, month and date. We have priced the luxurious Stauer *Noire* at a price to keep you in the black... only 3 payments of \$33. So slip into the back of your black limousine, savor some rich tasting black coffee and look at your wrist knowing that you have some great times on your hands.



*27 jewels and hand-assembled parts drive this classic masterpiece.*

**An offer that will make you dig out your old tux.** The movement of the Stauer *Noire* wrist watch carries an extended two year warranty. But first enjoy this handsome timepiece risk-free for 30 days for the extraordinary price of only 3 payments of \$33. If you are not thrilled with the quality and rare design, simply send it back for a full refund of the item price. But once you strap on the *Noire* you'll want to stay in the black.

**Exclusive Offer—Not Available in Stores**

**Stauer Noire Watch \$399†**

**Your Cost With Offer Code \$99 + S&P Save \$300**

**OR 3 credit card payments of \$33 + S&P**

**1-800-333-2045**

**Offer Code: NWT407-06**

You must use this offer code to get our special price.

† Special price only for customers using the offer code versus the price on Stauer.com without your offer code.

**Stauer®**

14101 Southcross Drive W.,  
Ste 155, Dept. NWT407-06  
Burnsville, Minnesota 55337  
www.stauer.com



Rating of A+



27-jewel automatic movement • Month, day, date and 24-hour, sun/ moon dials • Luminous markers • Date window at 3' o'clock  
• Water resistant to 5 ATM • Crocodile embossed leather strap in black fits wrists to 6½"-9"

*Stauer...Afford the Extraordinary.®*



# MARKETPLACE

BUY • SELL • TRADE • ACROSS TOWN • ACROSS TEXAS

**RHINO**  
STEEL BUILDING SYSTEMS

25 Year Warranty • Easy Bolt-Together Design  
Engineered Stamp Blueprints



Farm • Industrial • Commercial  
**RHINOBLDG.COM** 888-875-8233  
INFO@RHINOBLDG.COM

**Bank C.D.'s Due?**  
**CALL US NOW**

**1-800-359-4940** TEXAS  
TOLL-FREE  
[www.mattsonfinancialservices.com](http://www.mattsonfinancialservices.com)

**BLAKE MATTSO, CFP™**  
Signal Securities, Inc., 5400 Bosque, 4th Floor, Waco, TX 76710  
*Serving Customers All Over Texas*

All C.D.'s are insured to \$250,000 per institution by the FDIC. All C.D.'s are subject to availability. Securities offered thru Signal Securities, Inc., Member FINRA/SIPC 700 Throckmorton, Ft. Worth, TX 76102. (817) 873-4256.

**WD METAL BUILDINGS**  
Steel Shops • Ag Buildings  
Barndominium Homes



**We put it all together for you!**  
Concrete • Erection • Doors  
Instant Prices at [WDMB.com](http://WDMB.com)

**FLOATING FISHING PIER**  
On your pond or lake, with or without roof.  
All sizes—installation available.



**45 YEARS' EXPERIENCE**

Call for Free Information • (979) 820-3000  
[www.ellisonmarine.com](http://www.ellisonmarine.com) • Ellison Marine, Franklin, TX.

**BEST BUY WALK-IN BATH TUBS**



Family owned, Texas-built  
Lifetime guarantee  
against leaks  
Great for circulation,  
arthritis, stiff joints  
and relaxation

**Now Offering ONYX  
Custom Showers**

**CALL FOR PRICING**  
(we give approximate pricing  
for the tubs and showers)  
If you have any questions,  
please give us a call.

Visit Our Showroom  
3411 E. Hwy. 377, Granbury



**888-825-2362** [www.bestbuywalkintubs.com](http://www.bestbuywalkintubs.com)


**Steel Mobile Home Roofing**  
Leaks? High energy bill? Roof rumble?

Contact us at 800.633.8969 or  
[roofover.com](http://roofover.com)



**PERMA-ROOF**  
from Southern Builders

Mobile Home Roofover Systems Since 1983



**POLE, HORSE, HAY BARNs • ALL SIZES**  
CALL ANDY • 512-563-5237

**Low Cost Pole Barns**  
26' x 48' x 10'  
3 Sides Enclosed  
**\$7,995**



Hay/Horse Barns, Shops, Decks, Concrete Work and Pad Sites  
**Call Ron: 512-367-0428**





# Texas' OPEC

The story of the strangely named and powerful Texas Railroad Commission

BY ROBERT SPRINGER

FOR A THREE-PERSON AGENCY ORIGINALLY tasked with overseeing intrastate railways, the Railroad Commission of Texas has exerted an outsized impact on an unexpected market: oil. The commission's story is one of power and influence that spans more than a century.

In the late 1800s, railroads were a dominant economic force, analogous to what the tech industry is today, according to David Prindle, professor of government at the University of Texas at Austin and author of the book *Petroleum Politics and the Texas Railroad Commission*. The industry was abusing its power, and a nationwide movement caused Congress to create the Interstate Commerce Commission in 1887 to regulate railroads. Texas followed suit by creating the Railroad Commission of Texas in 1891 to regulate railroads that did not cross the state line.

The story behind the curiously named commission getting into the oil regulating business begins in 1901 with the Spindletop oil strike, which made Texas one of the world's top oil-producing areas. (The well was so prolific that it soon produced "more oil in one day than all the rest of the world's oil fields combined," says the American Oil & Gas Historical Society.)

This sudden oil wealth made Texans wary of Standard Oil, which had dominated the oil business in Ohio and Pennsylvania "by basically monopolizing transportation in the pipelines and then running the little guys out of business," Prindle says.

After trying and failing to pre-emptively outlaw Standard Oil, the Texas Legislature hatched an innovative plan to protect Texas' small oil producers. "Well, what are pipelines? Pipelines are transportation," Prindle explains. "Well, we already have a commission regulating



An oil gusher in Port Arthur, circa 1901

transportation, the railroad commission, so let's let the railroad commission regulate oil and gas pipelines."

When the East Texas oil field was discovered in 1930, chaos ensued because of the oversupply of crude that field produced, Prindle says. This oversupply caused prices to plunge, scaring producers. Prindle says there was a "huge fight" over whether the government would be able to regulate production from the wells.

The government won out over the oil producers. By 1935, the commission "had been given the authority to regulate production—that is, not just regulate pipelines but regulate the amount that each well could produce," Prindle says. Railroad regulation was out, and oil and natural gas regulation was in.

From the early 1930s to the early 1970s, the commission's goal was to stabilize the price of oil, as price volatility made it challenging for oilmen to plan. And by controlling how much a well could produce and where producers could drill, the commission achieved the price stability goal for about 40 years.

Texas wasn't the only place in the world

with oil, of course, so the commission's influence began to wane as large reserves were discovered in the Middle East, Venezuela and Nigeria, causing Texas' share of global production to decline.

Yet even as the railroad commission's influence diminished, its price control model was being studied by another group interested in regulating its production to control prices—the group that became the Organization of the Petroleum Exporting Countries. The proto-OPEC hired the railroad commission's chief engineer to show them how. That action helped set in motion the oil embargoes and gas wars of the 1970s.

Today, the commission has the same mandate and structure as in its heyday, albeit with less global influence. Periodically, lawmakers try to rename the commission to reflect its current mission, but the effort invariably fails. "I've twice been called to testify before a hearing of the Legislature," Prindle says. "I put on my suit and I go down there—I'm the guy who wrote the book, and I say, 'Well, yeah, if you want truth in advertising, change the name.' And of course, then nothing ever happens."

Robert Springer is a freelance writer who loves Tex-Mex and armadillos.

# FREEZE DRY AT HOME



## New, Revolutionary Home Freeze Dryers

### **BE PREPARED**

Preserve the food your family loves—fruits, vegetables, and complete meals.

### **FOOD STAYS FRESH**

Lock in the nutrition and taste of any food for up to 25 years.

### **YEAR-ROUND FLAVORS**

Enjoy seasonal harvests like squash, watermelon, and berries all year long.

 **HARVESTRIGHT**

More Color  
Options  
Available!



 **MADE IN AMERICA**

**1.800.726.7990**

**HarvestRight.com**





GONZALO  
GUZMÁN

## The Secret to Salsa

WHETHER SPOONED ONTO BREAKFAST tacos, devoured with chips or served with grilled red snapper, salsa's addictive heat elevates everything on the plate. This month's reader recipes serve up a delicious mix of charred, smoky and fiery flavors. To get a salsa fix without cooking, try the following from Gonzalo Guzmán, chef at Nopalito in San Francisco (and author of the eponymous cookbook, with Stacy Adimando). "Unlike a cooked tomatillo salsa, this version retains all the bracing freshness and acidity of its raw ingredients," he says. He suggests serving Salsa Cruda with meaty appetizers or entrées, like carnitas, or robust vegetables, like grilled portobello mushrooms.

PAULA DISBROWE, FOOD EDITOR

### Salsa Cruda

- 1-2 jalapeño peppers, coarsely chopped
- 7 medium tomatillos, husked and rinsed
- 1 large clove garlic
- Leaves from ¼ bunch cilantro
- Salt

1. In a food processor, combine the jalapeños, tomatillos, garlic, cilantro and a generous pinch of salt. Pulse until ingredients are well-blended but the salsa is slightly chunky.
  2. Taste and adjust the amount of chiles and salt as desired.
- Makes 2 cups.

Reprinted from *Nopalito: A Mexican Kitchen* (Ten Speed Press, 2017)

SALSA CRUDA



# Recipes

## The Secret to Salsa



THIS MONTH'S RECIPE CONTEST WINNER

PHYLLIS BUSTILLOS | UNITED COOPERATIVE SERVICES

"This is a first-place winner at the State Fair of Texas, and you will not find a better, more unique salsa anywhere," Bustillos writes. Made with both fresh and dried chiles, it's no wonder this complex, deeply flavored salsa is a staple at her family barbecues. This recipe makes enough to feed a crowd or provide leftovers to freeze for a future meal.

## Pick 'Em Up and Dust 'Em Off Smoked Salsa

- 3½ pounds red tomatoes on the vine
- 1½ pounds large tomatillos, husked and rinsed
- 1 medium Texas 1015 onion, quartered
- 2 serrano peppers
- 2 poblano peppers
- 1 clove garlic
- Olive oil
- 2 dried ancho chiles
- 1 dried pasilla chile
- 2 dried chiles de árbol
- 2 dried guajillo chiles
- ½ cup fresh cilantro
- ½ cup roasted (or canned) New Mexico green chiles
- Juice from 1 large lime, approximately 1 tablespoon
- ¼ cup apple cider vinegar
- 1 tablespoon ground cumin
- 1 teaspoon dried Mexican oregano
- ½ teaspoon sugar
- 1½ tablespoons salt

1. Prepare a smoker or grill for indirect heat cooking.
2. Combine the tomatoes, tomatillos, onion, serranos, poblanos and garlic in a mixing bowl. Add enough olive oil to lightly coat and toss to combine. Place the vegetables in the smoker or grill (using an aluminum drip pan or grate if necessary) and smoke at 225 degrees 30–40 minutes, until softened and lightly charred.
3. While the fresh vegetables are smoking, place the dried chiles in a small bowl with hot water and allow them to soak until softened, then drain, stem and seed the chiles.
4. Remove vegetables from smoker and cool slightly. Stem and seed the fresh chiles and peel the garlic. Combine the smoked vegetables with the dried chiles and remaining ingredients in a food processor or blender and process until combined. Taste and adjust seasonings, adding more salt, lime juice or heat (see sidebar) as desired. ► Makes about 3 quarts.

**COOK'S TIP** For a spicier salsa, do not seed the serrano peppers.

Enter online to win an El Gallo salsa grill kit.



## Grilled Jalapeño and Tomato Salsa

ELIZABETH GARCIA | BLUEBONNET EC

Ripe, flavorful tomatoes are key to creating the best flavor, Garcia tells us. Grilling the vegetables creates a smoky salsa that's best enjoyed warm with tortilla chips, smoked chicken or grilled fish.

- 6 jalapeño peppers
- 3 tomatoes
- 1 tablespoon chopped fresh rosemary
- 2 cloves garlic, chopped
- ½ teaspoon olive oil, plus more as desired
- Salt

1. Prepare a grill for direct heat cooking and build a medium-high fire.
2. Grill the jalapeños and tomatoes until blistered, turning as needed for even cooking, then place in a paper sack to steam.
3. Combine the rosemary, garlic and olive oil in a food processor and pulse into a coarse purée, then allow the mixture to macerate for a few minutes. Add seeded, stemmed jalapeños and pulse until the peppers are chopped. Remove to serving dish.
4. Place the grilled tomatoes in the food processor, add a pinch of salt and pulse 4–5 times, then fold into the pepper mixture. Taste for seasonings and adjust salt as desired. ► Makes about 1½ cups.

**COOK'S TIP** For a spicier salsa, use a combination of serrano and jalapeño peppers and/or leave the seeds in a couple of them. To ensure the vegetables don't stick to the grill, toss them with enough olive oil to coat before cooking.

## Knock Your Socks Off Salsa

RENE BEAUMONT | UNITED COOPERATIVE SERVICES

You'll want to add the cilantro (about a half bunch, leaves and tender stems) and perhaps a squeeze of fresh lime or red wine vinegar to balance the sweet and fiery flavors.

- 4–5 jalapeño peppers
- 1 onion, roughly chopped, divided use
- 4 Roma tomatoes, halved
- 2 cloves garlic, smashed
- 1 tablespoon canola or olive oil, plus more as needed
- 1 can (28 ounces) whole peeled tomatoes
- ½ teaspoon salt, plus more to taste
- Fresh cilantro (optional)

IF YOUR RECIPE IS FEATURED, YOU'LL WIN A TCP APRON!

## \$100 Recipe Contest

January's recipe contest theme is **Sunny Citrus**. Brighten winter with recipes featuring fresh grapefruit, orange, lemon or lime. Send us your favorite. The deadline is **August 10**.

**ENTER ONLINE** at [TexasCoopPower.com/contests](http://TexasCoopPower.com/contests); **MAIL** to 1122 Colorado St., 24th Floor, Austin, TX 78701; **FAX** to (512) 763-3401. Include your name, address and phone number, plus your co-op and the name of the contest you are entering.





1. Preheat oven to 350 degrees.
2. Combine the jalapeños, half of the onion, the tomato halves and garlic in a mixing bowl, drizzle with enough oil to lightly coat and toss to combine. Place on a baking sheet and roast 20 minutes, or until softened, then allow to cool.
3. Combine the canned tomatoes, roasted onion, Roma tomatoes and garlic in a blender and process to combine. Add the remaining raw onion, 1–2 of the jalapeños, salt and fresh cilantro, if using. Purée the mixture, taste and adjust the heat (adding jalapeños as desired) and salt. ▶ Makes about 2 quarts.

**COOK'S TIP** Don't skimp on oil for roasting vegetables—you'll want to use enough to lightly coat the ingredients—and be sure to scrape the flavorful juices into the blender. The delicious roasting oil will add flavor and help pull all the ingredients together.

**WEB EXTRAS ▶** Read this story on our website to see a recipe for Hatch Green Chile Salsa from a Bartlett EC member.

## Playing With Fire

Making salsa at home is often an intuitive process that incorporates garden ingredients, heat proclivities and whatever else you have on hand. Whether you're following a recipe or creating your own, remember that the heat level of fresh peppers can vary widely. One week they might be scorching and the next, mild, leaving fire-lovers wanting more excitement. To create more flavor and/or fire in your salsa, consider the following ideas.

**Allow chopped onion** to macerate with a squeeze of fresh lime juice and a pinch of salt before combining with other ingredients (this will soften the onion's sharp, raw taste and help balance overall flavors).

**Toast dried chiles** (in a dry skillet or on the grill) until puffed and lightly toasted before soaking.

**For a spicier salsa**, leave the seeds in a few of the peppers. When jalapeños and serranos don't add enough fire, add a blistering habanero, chile pequin, Thai bird chiles or ground cayenne pepper to the mix.

**Vinegar-based** pepper sauces like Cholula (my favorite), Crystal or Tabasco add heat and help make the other ingredients pop. Use them—in addition to salt—to finish and “brighten” your salsa if it needs more flavor. —PD



**BUILT STRONGER.  
LOOKS BETTER. LASTS LONGER.**



#4380

RESIDENTIAL | FARM | EQUESTRIAN | COMMERCIAL | COMMUNITY | REPAIRS

When you build with Morton, you build something that lasts. A Morton stands the test of time—we've been at this for more than 110 years after all. What got us here is simple: our materials, our people and a warranty that beats all others.

**MORTON BUILDINGS®**  
800-447-7436 • [mortonbuildings.com](http://mortonbuildings.com)

©2018 Morton Buildings, Inc. A listing of GC licenses available at [mortonbuildings.com/licenses](http://mortonbuildings.com/licenses). Ref Code 606

FREDERICKSBURG

WIN A TWO-NIGHT  
GETAWAY IN

GET DETAILS AND ENTER ONLINE AT  
**TexasCoopPower.com**

Check out [visitfredericksburgtx.com](http://visitfredericksburgtx.com)  
for more about Fredericksburg.



41816 Special Offer for New Customers Only

Get a 2018 American Eagle Silver Dollar at our cost!

☒ **YES!** Please send me the Uncirculated American Eagle Silver Dollar at Littleton's cost (limit 1). Plus, send my **FREE** Uncirculated National Park Quarter (one per customer, please).



ORDERS MUST BE RECEIVED  
WITHIN 30 DAYS

QTY	DESCRIPTION	TOTAL
1	American Eagle Silver Dollar (limit 1)	\$19.27
<b>FREE Shipping!</b> Merchandise TOTAL \$		<b>19.27</b>

☐ Check payable to Littleton Coin Co.

Charge my: ☐ VISA ☐ MasterCard  
☐ American Express ☐ Discover

► Card #: \_\_\_\_\_ Exp. Date: \_\_\_\_/\_\_\_\_/\_\_\_\_  
\_\_\_\_\_|\_\_\_\_\_|\_\_\_\_\_|\_\_\_\_\_|\_\_\_\_\_|\_\_\_\_\_|\_\_\_\_\_|\_\_\_\_\_|\_\_\_\_\_|\_\_\_\_\_|\_\_\_\_\_|\_\_\_\_\_|

Name \_\_\_\_\_ Please print clearly

Address \_\_\_\_\_ Apt# \_\_\_\_\_

City \_\_\_\_\_ State \_\_\_\_\_ Zip \_\_\_\_\_

E-Mail \_\_\_\_\_

Please send coupon to: Dept. 4U5435 41816

**Littleton** Coin Company® 1309 Mt. Eustis Road  
Littleton NH 03561-3737

America's Favorite Coin Source • TRUSTED SINCE 1945

45-Day Money Back Guarantee of Satisfaction

**FREE Gift!**  
when you order within 30 days

Get a **FREE** Uncirculated  
National Park Quarter!



**LATEST 2018  
RELEASE!**



Limit one per customer at this special low price!

**Get a 2018 American Eagle  
Silver Dollar at our cost!\***

You can't purchase this Uncirculated American Eagle silver dollar directly from the U.S. Mint. But you can now purchase the official 2018 U.S. silver dollar from Littleton Coin Company at our cost – and with **FREE** shipping to your home!

The beautiful and sought-after \$1 American Eagle is over 99.9% pure silver and carries the same design as the popular "Walking Liberty" silver coins of 1916-47. You'll also receive our fully illustrated catalog, plus other fascinating selections from our Free Examination Coins-

**Limited-Time Offer!**

**ONLY  
\$19.27**  
with **FREE Shipping!**

on-Approval Service, from which you may purchase any or none of the coins – return balance in 15 days – with option to cancel at any time. Don't delay – order your 2018 American Eagle silver dollar at our cost today!

**LATEST RELEASE!**

- ★ One ounce of 99.93% pure silver!
- ★ Beautiful mint Uncirculated condition!
- ★ From America's beloved Silver Eagle series – issued every year since 1986!
- ★ Limited-time offer for new customers

Due to fluctuations in the coin market, prices are subject to change.  
\* "At our cost" reflects market price as of November 27, 2017.

©2018 LCC, Inc.

**WANTED: DEMO HOMESITES FOR 2018 SEASON**

**Display This Maintenance-Free Pool And \$AVE \$\$!**

*Call TODAY to Qualify for this Limited-Time Opportunity!*



**PRE-APPROVED  
FINANCING  
AVAILABLE!**

**WE CONSIDER  
ANYTHING  
ON TRADE!**

VISIT US ON THE WEB!  
**WWW.SWIMTEXSUN.COM**



**STAYcation at Home in 2018!**

**1-800-SWIMTEX** (1-800-794-6839)

*A family owned and operated Texas Company since 1986.*





## School's Out

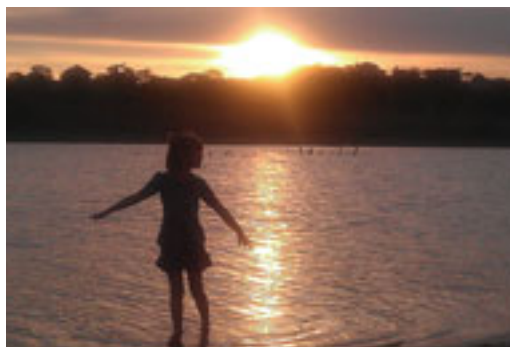
NOT TO TELL TALES OUT OF SCHOOL, but we reckon these reader photos are sweeter than Texas tea. Can you hear it? Summer is calling Texans, old school and new, to ditch the work and hightail it to the creek for some fun in the sun. **GRACE ARSIAGA**

**WEB EXTRAS ►** See Focus on Texas on our website for more photos from readers.

▼ **RUDY SEPOLIO**, Navasota Valley EC: Granddaughter Olivia keeps cool during summer break in Prairie.

▲ **PATRICIA GARCIA**, Medina EC: "Ariella is taking advantage of her preschool spring break and taking her little lamb for afternoon walks."

▼ **VIOLA MURRAY**, Pedernales EC: Evening at Canyon Lake in August



### UPCOMING CONTESTS

DECEMBER **HIGH CONTRAST** DUE **AUGUST 10**

JANUARY **HARVEST** DUE **SEPTEMBER 10**

FEBRUARY **TWO OF A KIND** DUE **OCTOBER 10**

All entries must include name, address, daytime phone and co-op affiliation, plus the contest topic and a brief description of your photo.

**ONLINE:** Submit highest-resolution digital images at [TexasCoopPower.com/contests](http://TexasCoopPower.com/contests). We do not accept entries via email. **MAIL:** Focus on Texas, 1122 Colorado St., 24th Floor, Austin, TX 78701. A stamped, self-addressed envelope must be included if you want your entry returned (approximately six weeks). Please do not submit irreplaceable photographs—send a copy or duplicate. We regret that *Texas Co-op Power* cannot be responsible for photos that are lost in the mail or not received by the deadline.

▲ **BOBBY NORRIS**, Pedernales EC: A little girl plays on the low-water crossing at Blue Hole Park in Georgetown.

► **LORI SONNIER**, Pedernales EC: "My son Kyle loves floating in the lazy river. We usually go to several different water parks each summer, and he makes a beeline for the lazy river."



## Pick of the Month Quilt Show: Rhapsody in Blue

**Fredericksburg** August 31–September 1  
(830) 997-7802, [vereinsquiltguild.org](http://vereinsquiltguild.org)

When Fredericksburg turned 150 in 1996, part of the celebration included a quilt show so successful it spurred the formation of the Vereins Quilt Guild, which this month holds its 10th biennial quilt show. The event includes bed turning, a boutique, donation quilt, silent auction, tearoom and vendors.



QUILT: BILYK KATERYNA | SHUTTERSTOCK.COM. CYCLISTS: SEEVERA | DREAMSTIME.COM. BALLOONS: MBLACH | DREAMSTIME.COM

## August 7

**Bandera** Cowboy Capital Opry,  
(830) 796-3045, [banderacowboycapital.com](http://banderacowboycapital.com)

## 8

**Levelland** [8–12] SPOTC Dog Agility Trials,  
(806) 894-4161, [malleteventcenter.com/events](http://malleteventcenter.com/events)

## 9

**Stephenville** Texstar Ford Lincoln Summer  
Nights Concert Series: Moe Bandy With Terri  
Hendrix and Lloyd Maines, 1-800-481-9345,  
[stephenvilletexas.org](http://stephenvilletexas.org)

## 10

**Junction** [10–11] Hill Country Fair Associa-  
tion Summer Classic Rodeo, (254) 212-9160,  
[facebook.com/hcfajunctiontx](https://facebook.com/hcfajunctiontx)

## 11

**Palestine** Dogwood Jamboree: Forever  
Country, (903) 729-7080,  
[dogwoodjamboree.com](http://dogwoodjamboree.com)

August 23–26  
Wichita Falls  
Hotter 'N Hell Hundred



**Henderson** [11–12] East Texas Sacred Harp  
Convention, (903) 863-5379, [texasfasola.org](http://texasfasola.org)

## 14

**Beaumont** [14–15] Paw Patrol Live: Race to  
the Rescue, (409) 951-5400,  
[pawpatrollive.com](http://pawpatrollive.com)

### NEW MF GC1705L



23 HP, 4WD, Hydro-Transmission,  
Quick Attach DL 95 Front End Loader  
**\$11,998 Cash or \$159.00 per month**



**MASSEY FERGUSON**  
THE LEGEND SINCE 1847

### NEW MF 1526L



25 HP, 4WD, Hydro-Transmission,  
Quick Attach L 100 Front End Loader  
**\$16,998 Cash or \$229.00 per month**

### NEW MF 1734EL



34 HP, 4WD, Gear Drive Transmission,  
Quick Attach L 105 Front End Loader  
**\$17,998 Cash or \$239.00 per month**

### NEW MF 2705EL



50 HP, 4WD, Shuttle-Transmission,  
Quick Attach L 135 Front End Loader  
**\$24,998 Cash or \$319.00 per month**



**WE DELIVER EVERYWHERE!**

### FOSTERS WORK & PLAY

3601 US Hwy. 190 W  
Livingston, Texas 77351

**(936) 967 - 0011**

[www.fostersworknplay.com](http://www.fostersworknplay.com)

[sales@fostersworknplay.com](mailto:sales@fostersworknplay.com)

\*Disclaimer: All payments listed are based on 4.49% interest rate for 84 months with 10% of purchase price down with approved credit through Agco Finance Corp. Prices do not include sales taxes, freight or set up charges where applicable. All HP ratings listed are approximate base engine HP.



18

**El Paso** Magoffin Home Victorian Sci-Fi Book and Tea Club, (915) 533-5147, [thc.texas.gov/historic-sites/magoffin-home-state-historic-site](http://thc.texas.gov/historic-sites/magoffin-home-state-historic-site)

23

**Fort Davis** [23-26] Davis Mountains Hummingbird Celebration, (432) 426-3015, [fortdavis.com](http://fortdavis.com)

**Wichita Falls** [23-26] Hotter 'N Hell Hundred, (940) 322-3223, [hh100.org](http://hh100.org)

24

**Tyler** [24-26] Texas Rose Breed Show, (903) 882-8696, [texasrosehorsepark.com](http://texasrosehorsepark.com)

25

**Big Spring** Comanche Warrior Triathlon, (432) 263-8235, [visitbigspring.com](http://visitbigspring.com)

**Galveston** An Evening With Robert Earl Keen, 1-800-821-1894, [thegrand.com](http://thegrand.com)

**Victoria** Dueling Pianos, (361) 576-6277, [theatrevictoria.org](http://theatrevictoria.org)

**Crockett** [25-26] Marine Corps League 1433 Gun Show, (936) 229-2023, [facebook.com/marinecorpleague1433](https://facebook.com/marinecorpleague1433)

27

**Stonewall** Commemoration of Lyndon Johnson's Birthday, (830) 868-7128, [nps.gov/lyjo](http://nps.gov/lyjo)

30

**La Grange** [30-Sept. 2] Fayette County Fair, (979) 968-3911, [fayettecountyfair.org](http://fayettecountyfair.org)



31

**Bedford** [31-Sept. 2] Blues & BBQ Festival, (817) 952-2128, [bedfordbluesfest.com](http://bedfordbluesfest.com)

**Kyle** [31-Sept. 2] Pie in the Sky Hot Air Balloon Festival, (512) 262-1010, [kyletxpieinthesky.com](http://kyletxpieinthesky.com)

## September 1

**Amarillo** Yellow City Sounds Music Festival, (806) 371-5224, [panhandlepbs.org](http://panhandlepbs.org)

**Fort Stockton** Wizarding World of Fort Stockton, (432) 701-0588, [thegaragetx.com](http://thegaragetx.com)

7

**Corsicana** Show and Dance With the Others, (903) 872-6779, [corsicanaopry.com](http://corsicanaopry.com)

**Lubbock** [7-9] National Cowboy Symposium & Celebration, (806) 798-7825, [cowboy.org](http://cowboy.org)

## Submit Your Event!

We pick events for the magazine directly from TexasCoopPower.com. Submit your event for October by August 10, and it just might be featured in this calendar.

### WE PAY TOP PRICES FOR COLLECTIBLES

Coins • Banknotes • Gold & Silver Jewelry & Scrap  
Vintage Costume Jewelry • Watches • Stamps  
Tokens • Historical Documents • Other Collectibles  
**TEXAS BUYERS GROUP • FREDERICKSBURG, TX**  
*All transactions private, confidential & secure.*

**830-997-6339 • [rzcoins@twc.com](mailto:rzcoins@twc.com)**

## Every tree needs a champion.

PRUNING • CABLING & BRACING  
INSECT & DISEASE MANAGEMENT  
FERTILIZATION & SOIL CARE



**BARTLETT  
TREE EXPERTS**

830-953-9007

[bartlett.com/Horseshoe-Bay-TX](http://bartlett.com/Horseshoe-Bay-TX)



### 10th Biennial Quilt Show

August 31, 9 a.m. - 6 p.m.  
September 1, 9 a.m. - 4 p.m.

Fredericksburg United  
Methodist Church

[www.verainsquiltguild.org](http://www.verainsquiltguild.org)

### TEXAS MEDICAL PLANS

Independent, Authorized Agent for



**BlueCross BlueShield  
of Texas**

An Independent Licensee of the Blue Cross and Blue Shield Association

**MEDICARE SUPPLEMENT COVERAGE**

**1-888-888-6698**

## Restoring and Preserving Our History

*The Friends of Gillespie County Country  
Schools*

In the heart of the Texas Hill Country visit 17 historic one-room schools built between 1847 and 1936 by following the 120 mile Gillespie County Country Schools Driving Trail through the scenic Fredericksburg, Texas countryside.

Visit our website for a tour map and information on our historic schools and community centers.

All schools listed on the National Register of Historic Places.  
Member of Country School Association of America.

[WWW.HISTORICSCHOOLS.ORG](http://WWW.HISTORICSCHOOLS.ORG)



## E-NEWS IN YOUR INBOX



SIGN UP TODAY AT

**TexasCoopPower.com**

# Lolling Around Luling

Town with tough reputation still basks in benevolence of its oil history

BY GENE FOWLER

WHEN YOU DRIVE INTO LULING, NESTLED along the San Marcos River about 24 miles southeast of the river's headwaters at San Marcos Springs, you notice right away that oil plays a major role there. A monumental faux derrick soars beside a visitors center at a major intersection on U.S. Highway 183. And around town, nearly 200 pump jacks—some adorned with bright cartoon figures—summon black gold.

Luling also is known for its annual **Watermelon Thump** festival held the last full weekend in June. And two of its eateries—**City Market** and **Luling Bar-B-Q**—are renowned destinations for barbecue pilgrims.

From 1874 to 1876, when Luling served as the end of the Galveston, Harrisburg and San Antonio Railway, Austin newspapers said Luling was “given over to the devil” and that everyone in town “goes armed at night.” Hence, “toughest town in Texas” became a common descriptor.

I learned about the town's drilling history at the **Luling Oil Museum**, housed in the 19th-century Walker Brothers building, one of the oldest mercantiles in Texas.

A colorful wildcatter with mystical inclinations named Edgar B. Davis brought in the original discovery well. Folklore recounts that the Massachusetts native drilled where he found the prettiest wildflowers, and the facts of his share-the-wealth binges are better than fiction. Davis, feeling that his gushers were gifts from God and that he needed to give back, funded enormous Luling picnics, a country club, hospitals, wildflower painting contests, a Broadway play about reincarnation and an agricultural demonstration farm called the **Luling Foundation**.

“Mr. Davis saw local farmers and ranchers struggling and wanted to help them develop diversified ag practices,”



**A whimsical pumpjack in front of a passing freight train in Luling**

explained Bonnie Dredla, Luling Foundation office manager, as she gave me a tour of the 1,123-acre site.

“One of our primary programs today is the Foundation Angus Alliance,” she continued. “We have over 200 head of bulls, and we practice freeze branding—that’s a process that uses liquid nitrogen or dry ice and denatured alcohol. It doesn’t burn the animal but turns the branded hair white.”

At the branding pen, I watched as Dredla’s brother-in-law, Jason Dredla, applied the more humane process to cattle in a chute designed by animal behavior expert Temple Grandin to be less stressful on the animals.

Foundation acreage is bordered on the west by the San Marcos River, and a few miles downriver stands the restored **Zedler Mill**. Its grist mill was built in 1874 as Luling sprang up with the railroad; a cotton gin soon was added, followed by a saw mill and feed mill. Tools and equipment on display at the mill museum include a quadruplex pump made in Brenham that pressed cotton into bales. The Zedler family began

producing electricity from the river as early as 1894.

Due to the setting’s natural beauty and a newly constructed pavilion, a couple gets married there just about every weekend.

Not even the rattling trains passing in the night could wake me at Luling’s **Ainsworth House Inn**, named for the commander who led the 36th Infantry Division ashore at Salerno, Italy, in advance of the Normandy landings of World War II. The inn’s Audie Murphy room is named for the war-hero-turned-film-star, who visited frequently.

Before leaving town, I stepped across Bowie Street from the inn to examine an ancient oak tree. There, according to Luling historian Riley Froh, Old West outlaws had carved directions to a buried treasure of stolen gold.

I couldn’t discern the map, but I still felt a living link to the days when Luling was known as the toughest town in Texas.

**Gene Fowler** is an Austin writer who specializes in history.



**WEB EXTRAS** ▶ Read this story on our website to view a slideshow.



# Why pay \$1,600 or more?

## HEAR BETTER FOR ONLY \$299<sup>EA</sup>!



SAME HIGH-QUALITY DIGITAL HEARING AIDS  
OFFERED BY AUDIOLOGISTS AND ENT'S.

**WOW...**  
That's 4 low payments  
of only **\$74.75** per aid!  
HURRY, OFFER ENDS SOON.

- ✓ **Risk-FREE 45-day home trial – 100% Money-back Guarantee!**
- ✓ **FREE** unlimited support from our licensed professionals *(via phone, email and chat)*
- ✓ **FREE** shipping      ✓ **No restocking fees**

**Honest prices, no gimmicks, and zero risk!**

If you're struggling with hearing loss it may be affecting you in ways you may not realize: feelings of isolation, depression, and stress by "pretending" you're hearing others. Maybe you avoid going to your favorite restaurant because of background noise. Even worse, untreated hearing loss may be linked to dementia.

How would your life improve if you addressed your hearing loss? We think you'd agree it's worth \$299 for a hearing aid.

The Apollo™-6200 is the perfect digital hearing aid to give you clear hearing and easy understanding. Designed with American-Made technology, you get the BEST technology for the BEST price.

**AMERICAN-MADE TECHNOLOGY ★ FDA REGISTERED ★ 100% DIGITAL ★ DOCTOR DESIGNED**

### ***Did you know...***

An independent study concluded that many consumers were more satisfied and received more value through **Hearing Help Express** than from their local hearing aid provider.

To read the entire study visit:  
[www.hearinghelpexpress.com/2018/01/26/hearing-aid-industry-analysis](http://www.hearinghelpexpress.com/2018/01/26/hearing-aid-industry-analysis)

The typical hearing aid costs over \$2,000 because of mark-ups and prepaid labor you may not use. Order safely from Hearing Help Express, you get manufacturer-direct prices (no middleman mark-ups or Audiologist prepaid labor charges), saving you over 80%.

Try the Apollo™-6200 completely Risk-FREE! With as little as \$74.75 down for each hearing aid (100% refundable). Try the Apollo-6200 for **45 days** and see if it's everything we've promised!

*"Had I known what a difference these hearing aids would make in my life I would have gotten them sooner. Life is so much more fun when you can hear it."* R. Mendelson



- Hearing aids by mail for 39 years
- Over 750,000 satisfied customers

## **Try the Apollo™-6200 hearing aid Risk-FREE for 45 days!**



Expires: 10/31/18

For fastest service call toll-free (Mon-Fri • 8 am - 5 pm CST)

**1-888-847-1189**

Order online

**[www.HearingHelpExpress.com](http://www.HearingHelpExpress.com)**

**PROMO  
CODE  
28-217**

If you decide the **Apollo-6200** is right for you, we'll gladly set you up on our easy 0% APR payment plan for the remaining three payments of \$74.75 for each hearing aid (*your initial payment will be applied as your first monthly payment*). Credit card required to process order.



# Save a Bundle on TV and Internet!

# dish

## 2-YEAR TV PRICE LOCK!

# \$59<sup>99</sup>

month  
for TV

# +

**ADD INTERNET**

 **Blazing-Fast  
Internet**

## It's All Included!

- ✓ Includes Hopper Smart HD DVR
- ✓ Includes HD Programming
- ✓ Includes One TV, Add More for \$5
- ✓ Includes Voice Remote Requires internet connected Hopper.
- ✓ Includes 190 Channels with Locals



Plus  
More!

## 30+ FREE Premium Channels

SHOWTIME STARZ MOVIE PACK

After 3 mos. you will be billed \$55/mo unless you call to cancel.

# NETFLIX

– Fully Integrated –  
Just Change The Channel  
And Watch!

Netflix subscription required.

## No Matter Where You Live

**ONLY  
49.99!**

Speeds from 25Mbps-1 Gbps  
**Now with Unlimited Data!**

TV service not required for Internet. Unlimited data refers to no hard data caps.

## Get DISH. Get \$100.



Must mention offer code **Card100**.

# 1-866-290-7151

Mon-Fri: 7am-10pm • Sat: 7am-9pm • Sun: 10am-7pm Central Time

[godish.com/pricelock](http://godish.com/pricelock) 

**iSe Haba  
Español!**

**dish**  
AUTHORIZED RETAILER

\*Prices include Hopper Duo for qualifying customers. Hopper, Hopper w/Sling or Hopper 3 \$5/mo. more. Upfront fees may apply based on credit qualification. Fees apply for additional TVs: Hopper \$15/mo., Joey \$5/mo., Super Joey \$10/mo. All offers require credit qualification, 2-Year commitment with early termination fee and eAutoPay. Offer for new and qualifying former customers only. Important Terms and Conditions: Qualification: Advertised price requires credit qualification and eAutoPay. Upfront activation and/or receiver upgrade fees may apply based on credit qualification. Offer ends 11/14/18. 2-Year Commitment: Early termination fee of \$20/mo. remaining applies if you cancel early. Included in 2-year price guarantee at \$59.99 advertised price: America's Top 120 programming package, local channels, HD service fees, and Hopper Duo for 1 TV. Included in 2-year price guarantee for additional cost: Programming package upgrades (\$69.99 for AT120+, \$79.99 for AT200, \$89.99 for AT250), monthly fees for upgraded or additional receivers (\$5-\$7 per additional TV, receivers with additional functionality may be \$10-\$15). NOT included in 2-year price guarantee or advertised price (and subject to change): Taxes & surcharges, add-on programming (including premium channels), DISH Protect, and transactional fees. Premium Channels: 3 Mos. Free: After 3 mos., you will be billed \$30/mo. for Showtime, Starz and DISH Movie Pack unless you call to cancel. Gift and Pre-paid Cards: Courtesy of GoDISH.com for credit-qualified customers. Customers who do not qualify may be eligible for a secondary gift offer. Cards are issued by Citibank, N.A. pursuant to a license from Visa® U.S.A. Inc. and managed by Citi Prepaid Services. Cards will not have cash access and can be used everywhere Visa® debit cards are accepted. Cards expire 6 months from date issued. Mail-in redemption form is required within 60 days of qualified activation to receive gift. Customer account must be current and in good standing at the time of redemption. Allow 6-8 weeks for delivery of gift. Other: Netflix streaming membership required. All packages, programming, features, and functionality and all prices and fees not included in price lock are subject to change without notice. After 6 mos., if selected you will be billed \$8.99/mo. for DISH Protect Silver unless you call to cancel. After 2 years, then-current everyday prices for all services apply. For business customers, additional monthly fees may apply. Free standard professional installation only. SHOWTIME is a registered trademark of Showtime Networks Inc., a CBS Company. STARZ and related channels and service marks are property of Starz Entertainment, LLC. © 2018 GoDISH.com. All rights reserved. Internet speeds, prices, and providers vary by customer address. \$49.99 price refers to 25Mbps plan. Restrictions apply. 25 Mbps internet service available nationwide, but may become temporarily unavailable to certain addresses based on local beam capacity. Availability is subject to change without notice. Internet not provided by DISH and will be billed separately. Call for details.